



6800 35th Ave NE  
Seattle, WA 98115  
206.524.0075

# Ruach



Congregation Beth Shalom • Voted in JT News—Best Congregation for 2010!

February 2012 • Shevat-Adar I 5772

Volume 44, Issue 6

## MESSAGE FROM RABBI BORODIN



I share this month with you a piece written by my friend and colleague Rabbi Menachem Creditor of Congregation Netivot Shalom. I found this piece on the workings and role of Halacha (Jewish law) to be a thoughtful expression of its importance and dynamism and I am grateful for Rabbi Creditor's permission to share it.

### Halachic Virtuosity

(c) 2012 Rabbi Menachem Creditor

with thanks to the Jewish Theological Seminary, for loving and supporting rabbis

Everything changes. The incredible suggestions of string-theory, that everything we think of as solid is precisely not, that matter is made up of very, very small moving parts ("strings"), that the "rock" upon which I

rely is unstable - these truths point beyond a wished-for constancy toward a dynamic reality. So too with Jewish tradition. Halacha, Jewish Law, has been codified over and over, but what can surprise even the most seasoned student of Halacha are the differences between various halachic codes over time, the sometimes radical shifts in halachic language and norms within tradition, and the rare but present explicit rejection of one Rabbi's ruling by another.

We must remember that Halacha, however solid it may seem, is made up from strands of tradition, vibrating slowly enough to give the semblance of stability. And, given that even fervent advocates of halachic change themselves crave constancy and order, preserving the harmonic togetherness of "halachic strings" matters. It is of vital concern that, before any change would be made to the halachic orchestra, that the individual musician stop to consider the symphony of which she is but one intentional part.

## Join us for Kabbalat Shabbat

*There's something for everyone every week*



**February 3—Hospitality Shabbat—** Attend a potluck Shabbat dinner at the home of one of our many hosts for the evening. RSVP directly to the host and find out what you can bring; look for details on who is hosting and how to RSVP in the Shavuon and cybershul. Services from 5:30-6:30pm

**February 10—Song Lover's Shabbat—** Come for an evening of harmonizing and table banging. All ages. Services from 5:30-6:30pm

**February 17—Parallel Kid's Program—** While the adults attend regular Kabbalat Shabbat services, children (2-7 years) will be invited to their own program to hear stories, learn songs, and other activities. Services from 5:30-6:30pm.

**February 24—Study Shabbat—** A question is posed in advance and a few people bring insights on the question. Services from 5:30-6:30pm

### Ongoing Schedule:

1st Shabbat of the month— Hospitality Shabbat	3rd Shabbat of the month— Parallel Kids' Program
2nd Shabbat of the month— Song Lover's Shabbat	4th Shabbat of the month— Study Shabbat

*Kabbalat Shabbat Services are 5:30-6:30pm through February 24. Starting March 2, services are 6:00-7:00pm.*

Can this metaphor live when the role of conductor is indefinable? Speaking plainly: since rabbis' notions of God are radically different one from the

*(Continued on page 2)*

**Edwin L. Bierman**  
**Scholar in Residence**  
**Yeshiva Weekend**  
*with*  
**Rabbi Daniel Goldfarb**  
**March 2-4, 2012**  
**Full Schedule on page 5**

### INSIDE THIS ISSUE:

Updates	1-4, 15
Youth Updates	4
Edwin L. Bierman Scholar-in-Residence	5
Purim Festivities	6
Adult Education	7-10
Anniversaries, Birthdays & B'nai Mitzvah	11
Events in Member's Lives	12-13
Contributions	13-14
Service Schedule and Calendar	16-18
Tzedakah Form	19

# Message from the Rabbi continued

*(Continued from page 1)*

next, is it possible to see the interplay of local communal norms as essentially interdependent with those of other communities? Or is one community's musical expression sufficient without that of its neighbors?

The basic human need to not be alone is useful here. Yes, I can live alone. But I'd choose not to. After all, life is with people. So too am I convinced that one community's norms does not the fullness of tradition make. The interplay between communities is crucial if one's tradition is to remain connected with Tradition. Self-sufficiency is not a traditional Jewish communal (nor individual) ideal. Jumping back into the musical metaphor, consider the power of a skilled clarinetist playing alone. The grace and resonance may be unquestionable, but when he plays alone, his expression has no counterpoint, no context, no opportunity to be challenged, no chance for "play." Said simply: two horns are better than one.

So, though tradition is made up more of motion (Teshuvot/Rabbinic Responses) than anything else, with moving parts deeply sensitive to ever-changing realities, it is essential for every community - members and leaders - to care about the impact of any decision upon others. Again, re-entering the musical framework, a violinist who cares not for the musical score is also not truly part of the orchestra, and through their disregard for the whole functions as an agent of destruction. But the opposite is also true: the violinist who, steeped in the

music, catches the eye of the clarinetist, can spark a process of grounded virtuosity, increasing the excitement and capacity of the other musicians, can thereby more dynamically engage the assemblage of audience members, the collective enthusiastic energy reaching even to the conductor.

This is a demanding model. We must, if we hope to embody a halachic virtuosity that makes people and God sing, master halachic musicianship. But music is not the score. Music is a living, beautiful thing with countless facets. The experience of music is not the same as its complicated theory, and similarly, the experience of Halacha is not its complicated theory. An orchestra exists not to bear testimony to its history but for the purpose of being a living generative power, charged with a specific way of resonating within the world and within the human community, of transmitting the passion and skill of passed masters, and of being the inspiring masters of today's music.

So too, today's rabbis are charged with being engaged and creative leaders, bearers of a specific resonant tradition, of being halachic virtuosos, interconnected with a network of similarly purposeful rabbis and religious communities.

The possibilities of the spiritual symphony ahead are unlimited. Imagine the music!

## CBS 2011-2012 Board of Directors

<b>President</b> Jill Cohen	<b>Vice-President</b> Harry Goldman	<b>Religious School Committee Chair</b> Tamara Griffin	Steven Katz Patti Kieval Rachel Kleit
<b>President Elect</b> Mark Stiefel	<b>Treasurer</b> Marie Poole	<b>Members at Large:</b> Rhona Feldman Neeloufar Gharavi Jeff Gillman Joel Goldstein	Ron Schneeweiss John Schochet Peter Shapiro Amy Stephson Perry Weinberg
<b>Past President</b> Susan Monas	<b>Secretary</b> Craig Lawson		

### Deadlines:

Articles / Announcements are due in synagogue office by the 10th of each month for the following month's newsletter.

206-524-0075 CBS phone  
206-525-5095 CBS fax  
[info@bethshalomseattle.org](mailto:info@bethshalomseattle.org)

**Rabbi Jill Borodin**  
[rabbiborodin@bethshalomseattle.org](mailto:rabbiborodin@bethshalomseattle.org)

**Tzachi Litov**  
Executive Director  
[tzachilitov@bethshalomseattle.org](mailto:tzachilitov@bethshalomseattle.org)

**Irit Eliav**  
Director of Education  
[iriteliav@bethshalomseattle.org](mailto:iriteliav@bethshalomseattle.org)

**Leah Lemchen**  
Early Childhood Center Director  
[leahlemchen@bethshalomseattle.org](mailto:leahlemchen@bethshalomseattle.org)

**Carol Benedick**  
Program Director  
[carolbenedick@bethshalomseattle.org](mailto:carolbenedick@bethshalomseattle.org)

**Marjie Cogan**  
Front Office Coordinator  
[marjiecogan@bethshalomseattle.org](mailto:marjiecogan@bethshalomseattle.org)

**Sandy Sloane**  
Lifecycle Coordinator  
[sandysloane@bethshalomseattle.org](mailto:sandysloane@bethshalomseattle.org)

**Josh Scafe**  
Asst to the Director of Education  
[joshscafe@bethshalomseattle.org](mailto:joshscafe@bethshalomseattle.org)

**Michele Stern**  
B'nai Mitzvah Coordinator  
[bmitzvah@bethshalomseattle.org](mailto:bmitzvah@bethshalomseattle.org)

**Emma Shusterman**  
Bookkeeper  
[emmashusterman@bethshalomseattle.org](mailto:emmashusterman@bethshalomseattle.org)

**Jaen Gomez-Cervantes**  
**Carlos DeICid**  
Custodians/Handymen

**Rimma Lobas**  
Custodial Attendant

Synagogue office address: 6800 - 35th Ave NE • Seattle, WA 98115 • website: [www.bethshalomseattle.org](http://www.bethshalomseattle.org)

## Updates

### Would you like to work at Beth Shalom?

The Beth Shalom Early Childhood Center is looking for part time staff and substitutes. Our ideal candidates will have credits in ECE, (including STARS requirements) and a passion for the education and development of young children. Someone who speaks Hebrew or has a Judaic background is a plus. Lifting toddlers and changing diapers required. For more information email Leah Lemchen, at [eccdirector@bethshalomseattle.org](mailto:eccdirector@bethshalomseattle.org).

#### Our Mission

The Beth Shalom Early Childhood Center is committed to providing excellent quality childcare and preschool for all young children in a safe, nurturing, Jewish environment.

#### Our Vision

The ECC welcomes all children and their families, including those involved in Jewish life to varying degrees as well as non-Jewish families. We respect and value diversity, individuality and family culture. We strive to create a comfortable environment and be an extension of home. We value families for their strong bonds and commitment to their children and seek continuous communication

We integrate Judaism and Hebrew into our creative and child centered curriculum. Teachers plan curriculum based on the needs and interests of each individual group of children. We work to meet the needs of the whole child: socially, emotionally, physically, intellectually and spiritually.



### Beth Shalom's Judaica On-line Shop

The box on the CBS homepage at [www.bethshalomseattle.org](http://www.bethshalomseattle.org), directly benefits Congregation Beth Shalom.

A percentage of all proceeds will come back to us and is yet another way to support the community at no additional cost to you. Just shop!

A few ways this site can be useful would be to consider getting your simchah gifts here for B'nai Mitzvah, weddings and other lifecycle events. There is an online registry to take advantage of as well as many other exciting benefits.

The direct link to the website: <http://bethshalomseattle.judaicabeautiful.com/store/> or you can go to our website at [www.bethshalomseattle.com](http://www.bethshalomseattle.com).



### Buy Scrip/Gift Cards For CBS

If you would like to purchase scrip for QFC/Fred Meyer, PCC, and now: Safeway, Albertsons, Home Depot, Starbucks, and ARCO or if you have any questions about the scrip program, please contact Kevin Coskey at (206) 365-2275 or [scrip@bethshalomseattle.org](mailto:scrip@bethshalomseattle.org), and the CBS Offices at 206-524-0075.

### The Shabbas Chefs Cook-at-Home Cookbook!

A committee to produce our very own cookbook has started to form.

Would you like to be involved with this project? If so, contact Judith Benjamin at [judithbenj@comcast.net](mailto:judithbenj@comcast.net)

## Updates

**FROM THE SOCIAL ACTION COMMITTEE, CONTACT: GAIL COSKEY/NICOLE GUIDRY**

*Mitzvah opportunities at Purim Megillah reading - Bring your wallet or checkbook!*

"If a community lacked a synagogue and a shelter for the poor, it was first obligated to build a shelter for the poor."  
- Seder Hasidim

There are four mitzvot associated with the Purim festival. One of the four is to give to more than one needy individual at Purim. The SAC will be putting together Welcome Baskets at Purim for those less fortunate.

These baskets of useful household items are given to families and individuals moving into Sand Point Transitional Housing for individuals and families who were formerly homeless. Items will be available for you to purchase and contribute to a basket. (Or, bring an item to contribute: watch for suggestions in the March Ruach SAC column and on Cybershul.) We'll also be collecting cash and checks for JFS and/or H2R programs to help the homeless. Kevin Coskey will be selling gift cards to donate to JFS for Purim. (And selling gift cards for your

own consumption.) It is a good way to give Tzedakah to fulfill the mitzvah of Purim. This way you will be helping CBS and the less fortunate.

We look forward to seeing you in March at Purim!

Yasher koach to Sheryl Kipnis for once again organizing the CBS Blood Drive in November. The Puget Sound Blood Bank collected 29 units of blood. Since each unit can be used for three individuals, donators helped almost 90 people! Look for information in upcoming Ruachs and Cybershuls for this twice a year mitzvah opportunity.

Yasher koach to Joan Lite Miller and Marilyn Meyer for shopping and head chef duties for the January Teen Feed.

To learn more about the Social Action Committee contact Gail Coskey or Nicole Guidry Haber at: [sacchairs@bethshalomseattle.org](mailto:sacchairs@bethshalomseattle.org).

## Youth Updates

**FROM THE DIRECTOR OF EDUCATION: IRIT ELIAV**

As I write this, it is a cold, grey, January day in Seattle. Although I love living in the Northwest, I do miss the sunshine I experienced growing up in Florida. The cold weather has kept me dreaming of summer. Over the past few years, we have kicked off the summer season with an amazing Family Camp weekend at Camp Solomon Schechter. Each year we dive into a new educational theme, exploring Jewish perspectives on a range of subjects including food, heroes, geography, literature, and music. We spend a glorious weekend filled with learning, singing, playing games, and making new friends.

It is an incredible weekend that has created so many memories that I will always treasure. I love hearing people introduce themselves to new friends on Friday evening and then watch them exchange phone numbers

on Sunday morning so they can arrange play dates for their kids at home. I love seeing the creativity and energy of the children as they run around camp solving the clues of the scavenger hunt or they come up with unique themes for our cake decorating contests. I love the exhausted, but happy looks on the face of our staff as we spend a few minutes relaxing at the campfire on Saturday nights after the children have all gone to bed...

If you have not yet attended Family Camp with Beth Shalom, I hope you will consider joining us! This year's Family camp will be held June 8th-10th, 2012. If you'd like more information about the weekend, please contact me at [iriteliav@bethshalomseattle.org](mailto:iriteliav@bethshalomseattle.org). I look forward to spending some quality time by the lake with many of you this June!

### SCHOLAR-IN-RESIDENCE HOSPITALITY

Hosts are needed on March 2-3 for Shabbat Hospitality during Scholar in Residence Weekend.

Please contact Joel Freedman, [cbshosts@coryfreedman.com](mailto:cbshosts@coryfreedman.com), if you are able to provide hospitality.

# Jerusalem comes to Seattle!

Conservative Yeshiva Weekend  
with Rabbi Daniel Goldfarb  
Edwin L. Bierman Scholar-in-Residence

## Is Religion Good or Bad for the World?

*A Text Study of Alenu L'Shabeach and  
John Lennon's Imagine*

**Friday, March 2, 8:15-9:30pm**

*Childcare available by pre-registration*

Kabbalat Shabbat Service, 6:00pm

Dinner at 7:15pm by reservation only

\$15/member, \$25/non-member,

Children 3 years and under free.

Informal schmooze on Progressive Masorti

Judaism in Israel, 9:30pm

## D'var Torah—Parshat Zakhor

**Saturday, March 3**

at Shabbat morning services

Services begin at 9:30am. Kiddush lunch at 12:15pm

*Children's programming during services*

## From Bernie Madoff to Strauss Kahn

*Are people sinning more now than ever,  
and if so, why?*

**Saturday, March 3, 1:15-2:30pm**

*Childcare available*

Games and hevruta learning, 2:30pm

Minchah service, 4:30pm

## Parental Advice on Avoiding Sin—Wisdom from Pirkei Avot

**Saturday, March 3, 4:30-5:30p**

Seudah and singing, 5:30pm

Maariv and Havdallah, 6:45-7:15pm

## Respect for Elders and Parents

*Are There Limits?*

**Saturday, March 3, 7:15-8:30pm**

*Supervised children's program available*

Dessert and Singing, 8:30pm

## Learn at All Levels—Sunday, March 4

The Final Four Playoffs – of Mitzvot  
with Rabbi Goldfarb

*geared towards people with background in Jewish learning*

10:30am-12:00pm

Exploring the Book of Esther  
with Rabbi Borodin

*geared towards beginning Jewish learners*

10:30am-12:00pm

**Lunch, 12:00-1:00pm**

by pre-registration

\$10/member, \$15/non-member

Are the Ten Commandments Jewish?  
with Rabbi Goldfarb

*geared towards beginning Jewish learners*

1:00-2:30pm

The Inner Dimension of Purim  
with Yiscah Smith

*geared towards people with background in Jewish learning* 1:00-  
2:30pm

*Childcare available by pre-registration*

## Closing Program - Kaddish D'Rabanan

2:30-2:45pm

**Scholar in Residence Weekend Pillar**

\$36/member, \$50/non-member

Commit to the whole weekend of meals and study.

Includes Friday night dinner, Sunday lunch and

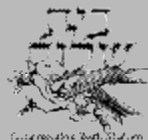
Adult Education prep classes.

*Let us know if you need Shabbat Home Hospitality.*

All events take place at Congregation Beth Shalom

6800 35th Ave NE, Seattle, WA 98115

(206) 524-0075 [www.bethshalomseattle.org](http://www.bethshalomseattle.org)



Dinner and Lunch pre-payment and  
childcare registration required by  
Monday, February 27

206-524-0075

[marjiecogan@bethshalomseattle.org](mailto:marjiecogan@bethshalomseattle.org)

or register online,

[www.bethshalomseattle.org](http://www.bethshalomseattle.org)

2012



# PURIM Festivities

at  
**CONGREGATION BETH SHALOM**

## EREV PURIM CELEBRATION

**Wednesday, March 7th**

**6:15—7:00 PM**

Purim Katan—special Purim celebration for kids 0-5 years and their parents

**7:00—7:15PM:** Music—Klez Katz

**7:15—7:30PM:** Children & Adults' Costume Parade & Awards

**7:30—8:00PM:** Not Ready for the High Holidays Players' Purim Play

**8:00—8:15PM:** Debate: The Hamantaschen or the Latke

**8:15—9:15PM:** Children's Activities

Ma'ariv Service

Megillah Reading

Due to *Kashrut* and dietary restrictions, we respectfully request that you not deliver *mishloah manot* at the Shul.  
Thank you for your cooperation.

## PRE-PURIM EVENT

**Sunday, March 4th**

**3:00—5:00PM**

Shaarei Tikvah: Gates of Hope Celebration for People of All Abilities

Co-sponsored with JFS & Temple B'nai Torah



Congregation Beth Shalom  
6800 35th Avenue NE Seattle, WA 98115  
206-524-0075 [www.bethshalomseattle.org](http://www.bethshalomseattle.org)

## Social Action Committee Purim Tzedakah Opportunities at Beth Shalom

- Donate for housing for the homeless
- Purchase food gift cards to be donated via JFS Emergency Services
- Purchase household items at CBS and put them in a welcome basket to be donated to residents of Sand Point Transitional Housing.
- Donate non-perishable food for the JFS Food Bank



## PURIM DAY CELEBRATION

**Thursday, March 8th**

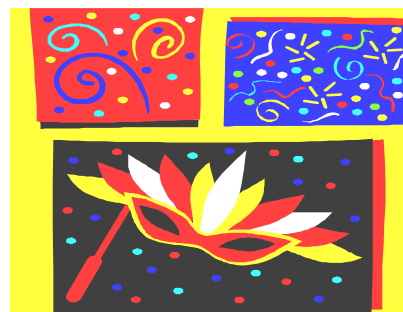
**7:00—8:30AM**

Morning Minyan & Megillah Reading

**8:30—9:15AM**

*Seudat Mitzvah* Festive Breakfast

Everyone is welcome!



## ADULT EDUCATION SPRING 2012

### **שיעור פרקי אבות - Pirkei Avot**

with the commentary of Me'am Lo'ez

Instructor: Yiscah Smith

*Avoth* (*Pirkei Avot* – The Ethics of the Fathers) is the one Talmudic tract that explores the very roots of Judaism. It has long been regarded as a rare treasure of our Torah tradition. *Pirkei Avot*, as contrasted with the Talmud's discussions around Jewish law, centers our attention directly on the Jew's efforts to improve one's relationship with G-d and fellow human being. Of all the many commentaries written on *Avoth*, perhaps the clearest is that published in 1747 by Rabbi Yitzchak Magriso of Constantinople, as part of the famed Me'am Lo'ez series. His commentary was written in Ladino and was translated into English in 1978 by David N. Barocas, a Sephardic scholar from Rodesto, Turkey and then edited into a contemporary idiom by Rabbi Aryeh Kaplan. Rabbi Magriso ferrets out the root meaning of the text, and presents it in clear, unambiguous language. Stories, parables and ethical discussions round out his commentary to produce a clear and highly inspirational teaching.

*Time: All classes held on Tuesday nights, 8:15–9:15PM*

**Sign up for as many sections as you wish.**

#### **Section IV:**

*Dates: Feb. 7–Mar. 6 (4 weeks)*

*Cost: \$40/Members; \$60/Non-members*

#### **Section V:**

*Dates: Mar. 13–Apr. 17 (5 weeks)*

*Cost: \$50/Members; \$75/Non-members*

### **Women's Rosh Chodesh Chavurah**

**Sunday, February 26th  
7-9pm**

#### **Beyond Esther, the Beautiful**

**Presenter Robin Cohn  
Rosh Chodesh Adar**

*By asking the right questions, together we can discover the brilliance of Queen Esther, a model for uncovering our own virtuosity.*

Send email [cbienn@yahoo.com](mailto:cbienn@yahoo.com) to RSVP and find out the address for this month's Rosh Chodesh chavurah.



### Wednesday Classes

#### **Propheting From Isaiah,**

**Instructor: Jeremy Alk**

So important was this great Biblical prophet that there had to be at least two of them! Who were these men and what were their missions? We will examine their lives, the messages they conveyed, and how they still affect our lives this very day. No Hebrew knowledge is necessary.

*Time: Wednesday nights, 8:15-9:15pm*

*Dates: Feb. 1, 8, 15, 29, Mar. 14, 21 (6 sessions)*

*Cost: \$60/Member, \$90/Non-member*

### Scholar in Residence Preparation

#### **Lashon Hara,**

**Instructor: Mark Solomon**

Wednesday, February 15, 7-9pm

Gossip or Lashon Hara, literally the "evil tongue," is prohibited under Jewish law. This class takes an in depth look at Jewish texts concerning Lashon Hara and its relevance to some of the themes of Scholar in Residence weekend.

*Cost: \$20/Member, \$30/Non-member*

Class is free for Scholar in Residence Weekend pillars

#### **Becoming More Familiar with Talmud,**

**Instructor: Yiscah Smith**

Wednesday, February 29, 7-8pm

Would you like to deepen the experience of Scholar in Residence weekend? Our Edwin L. Bierman Scholar, Rabbi Daniel Goldfarb, will teach to all levels of Jewish knowledge. However there will be opportunities throughout the weekend to study biblical sources in greater depth. Prepare yourself for this genuine Yeshiva experience by learning in advance:

- The difference between Mishna and Gemara.
- The timeline and the context in which the Talmud was written.
- How to locate a Talmudic passage when referenced in another text.

*Cost: \$10/Member, \$15/Non-member*

*Class is free for Scholar in Residence Weekend pillars.*

# Adult Education

## Shabbat Learning

*There is no charge for Shabbat Learning.*

### Israel Discussion Group

*Usually 1st Shabbat of the month, 1:15—2:15pm*

Next Discussion: February 4, no charge

### Learner's Minyan with Ron Schneeweiss

*2nd Saturday of the month, 10:30-11:15am*

#### February 11, 2012

Torah service (1)

Taking out the Torah

#### March 10, 2012

Torah Service (2) How to do an Aliyah/Hagbah/Gelilah

#### May 12, 2012

Torah Service (part 3)

Returning the Torah

#### June 9, 2012

Ashrei

#### July 14, 2012

Ein Keiloheinu; Aleinu

#### August 11, 2012

Kaddish; Adon Olam

#### September 8, 2012

Tallit/Tzitzit

## Torah and Prayerbook

### Beth Shalom *Beit Midrash*

Come join fellow scholars in increasing your Talmudic knowledge. CBS member, Joel Goldstein, will be teaching from the Bava Kamma, the 8th chapter regarding people injuring other people. Each class will begin with an introduction from the instructor, followed by guided partner, or hevrutah, study. All levels are welcome.

*Dates: 2nd & 4th Thursdays of the month, 7:30-9pm.*

*Cost: \$5/class, or 6 classes for \$25. Buy your punchcard through the office or on our website.*

### Sunday Torah Study

The Northwest's feistiest Torah study group wrestles with the text of the upcoming parashah every week in a member-led medley of laughter, challenge, and insight. High-energy participation is strongly encouraged; no prior study is necessary.

*Time: Weekly on Sunday, 10:15-11:15am*

*Cost: No Charge*

### Ashrei for Adults

Instructor: Talya McCurdy

Can't keep up with the kids? You are not alone! Come drop in on our confidence –building workshops to make peace with this liturgical tongue-twister. All levels welcome.

*Time: Saturdays, 11am-12:00pm*

*Dates: February 4, 18, 25*

*Cost: No Charge*



### Middot & Mitzvot with Shirah Bell & Joel Goldstein

*4th Shabbat of the month, 1:15-2:30m, no charge*

*Next Discussion: February 25*

*Topic: Compassion—Rachamim*



We'll use Alan Morinis' book *Everyday Holiness* and excerpts from the Talmud to explore a middah and its relationship to specific mitzvot. Shirah Bell will bring her knowledge and experience with Mussar; Joel Goldstein will bring his knowledge and love of Talmud and Torah and Halachah.

The moral precepts of Judaism demand that we be compassionate to every soul. The Hebrew term for compassion—*rachamim*—shares its linguistic root with the word *rechem*, which means "womb." From this, we interpret that it is an inner experience of touching another being so closely that you no longer perceive the other as separate from you. However, the Jewish view goes further.

What is it that turns the inner, empathetic connection into compassion? The answer resides in the Jewish insistence that inner qualities only reach a state of *sh'lemut*, "wholeness," when they are brought out into the world of action. Having a good heart is not the final goal that Mussar sets for us, as Rabbi Shlomo Wolbe clarifies: to really elevate our soul-traits we must put them into action. (*Alei Shur*, vol. 2 (Jerusalem: Hotsa'at Bet HaMussar, 1986, 40). Thus, we can define compassion as a deep emotional feeling arising out of identification with the other that seeks a concrete expression.

A midrash tells us that God reflected, "If I create the world with only the attribute of compassion, no one will be concerned for the consequences of their actions, and people will feel impunity to act badly. But if I create the world with strict judgment alone, how could the world endure? It would shatter from the harshness of justice. So I will create it with both justice and compassion, and it will endure."

We'll discuss two mitzvot. One is the mitzvah "Love your neighbor as yourself". We'll explore which comes first, loving myself or loving my neighbor. What does "loving" mean in the world of action? The second mitzvah is "Don't place a stumbling block before the blind." We need to recognize people's weaknesses, taking care not to inadvertently cause them harm, nor feed the weakness by our actions or too much kindness. How can we be sure we are doing the right thing?

Looking forward to discussing compassion after Kiddush February 25, 2012 from 1:15-2:30pm at Congregation Beth Shalom.

(Adapted by Shirah Bell and Joel Goldstein from *Everyday Holiness* with permission of Alan Morinis; all rights reserved.)

## Adult Education

### Stitch and Schmooze



Join other Knitters and Crocheters on the **first Sunday of the month** (*usually*) for a fun 2–hours of conversation and relaxation. Any level of knitting, crocheting, or other handwork is invited. Kids are welcome.

Contact Carol Benedick at (206) 524-0075/ [carolbenedick@bethshalomseattle.org](mailto:carolbenedick@bethshalomseattle.org) for the address of this month's Stitch and Schmooze. Please let her know if you would like to host the next one.

*Time: 11:00am-1:00pm*

*Upcoming Dates: 2/05 at the home of Shirah Bell*

*Cost: No Charge.*

### Lighting our way:

### Mussar Methods for revealing our unique selves

In this series you will have the opportunity to explore your character traits through a Jewish lens. The Torah says that our purpose in life is to manifest our pure souls. Each of us has a unique "soul curriculum", being off balance in some character traits (middot) and needing spiritual guidance to see ourselves in new ways as well as practical structures to make changes. The core teaching of Mussar is that we are pure and holy, but our essence is often obscured by extremes of emotion, desire, and bad habits. Our work in life is to uncover the brilliant light of our soul. How? We'll do text study of five middot (patience, compassion, truth, responsibility, and equanimity) and learn practical methods for change, such as journaling, meditation, self-designed challenges, and chanting. The group process is akin to the traditional Mussar "va'ad" in which members share their personal reflections and help each other with their soul work. We'll use Everyday Holiness written by Alan Morinis of The Mussar Institute, and excerpts from traditional texts.

This series will have 7 sessions spread over 11 weeks. In the intervening weeks each student will meet with another class member to engage in the traditional Jewish practice of chevruta learning.

*Thursdays, 1:00 – 2:30 pm*

*\$125 per person, class size limited.*

*Register by contacting Shirah Bell at [sb@nineseeds.com](mailto:sb@nineseeds.com)*

*Location: home of Shirah Bell 6538 39th Ave NE, Seattle WA*

*Dates: March 1, 8, 29; April 5, 19; May 3, 17*

### Beginning Israeli Dancing with Rhona Feldman

Beginning Israeli Dancing for Adults takes place Wednesday nights thanks to the continued generous support of CBS member, Rhona Feldman. Rhona will start with a half hour of basics. She'll teach/review the steps that are the building blocks for many dances. All are welcome to stay for the more advanced classes starting at 7:15pm. Please RSVP as soon as possible if you're interested in the Basics Class at 6:45pm. Older teens and all experience levels are welcome. Mark your calendars for every Wednesday.

*Come on and GIVE IT A TRY!*

*Time: Wednesdays 6:45 – 8:30pm*

*Cost: 5-Session Punch Card—  
\$30/Members; \$40/Non-members*



### Modern Hebrew Literature with Joel Altus and Lisa Orlick



This course will look at the themes and aesthetics of modern Hebrew and Israeli literature. With aspirations of creating an inspiring involvement with the subjects before us; we hope to provide historical and political context, insight in to the evolution of literary style and expressions, and above all the characteristic ways poets and writers working principally in Israel have addressed the human condition as reflected in their unique circumstances. It is a course that in a short period will be less led than guided, hopefully eliciting everyone's engagement, involvement and excitement for the varied topics and vivid personalities we will certainly encounter.

**Next class: February 8th**

**Topic: to be announced**

*Time: 7:00-8:30pm*

*Dates: Usually the 2nd Wednesday of the month.*

**NO CHARGE.**

# Adult Education

## Adult Education Registration

Please return with payment to Congregation Beth Shalom, 6800 35th Ave NE, Seattle, WA 98115

<b>Name:</b>	
<b>Address, City, State, Zip:</b>	
<b>Phone, Email:</b>	(     )     ,

**PLEASE INDICATE YOUR COURSE SELECTIONS**

Pirkei Avot, Sect. IV, \$40/member, \$60/non-member Pirkei Avot, Sect. V, \$50/member, \$75/non-member Propheting from Isaiah, \$60/member, \$90/non-member Becoming More Familiar with Talmud, \$10/member, \$15/non-member <i>(Free for Scholar in Residence Pillars)</i> Beit Midrash/Talmud Study, \$5/class, Punchcard \$25/6 classes Sunday Torah Study, no charge Lashon Hara, \$20/member, \$30/non-member <i>(Free for Scholar in Residence Pillars)</i>	Ashrei for Adults, no charge Israeli Dancing, Punch Card - \$30/member, \$40/non-member Modern Hebrew Literature, no charge Rosh Chodesh Chavurah, no charge Middot & Mitzvot, no charge Israel Discussion Group, no charge Learner's Minyan, no charge Stitch & Schmooze, no charge
---	---

Member     Non-member    *A 3% fee is applied to all credit card payments*

Enclosed is my payment via \_\_\_\_\_ Check \_\_\_\_\_ Visa/MC \_\_\_\_\_  
 Card # \_\_\_\_\_ / \_\_\_\_\_ / \_\_\_\_\_ exp. \_\_\_\_\_      Verification Code \_\_\_\_\_

Signature of Cardholder \_\_\_\_\_ date \_\_\_\_\_

**Total Tuition:** \_\_\_\_\_  
**3% CC fee (if applicable)** \_\_\_\_\_  
**Total Included:** \_\_\_\_\_  
*Scholarships are available for members. Let us know!*

**Refund Policy:**

Beth Shalom will refund tuition in the event a course is canceled. Students who withdraw from a course and request a refund within two weeks of the course's start date are eligible for a pro-rated refund. Tuition will not be refunded for course withdrawal after two weeks from a course's start date.

**For Office Use Only**  
**Date Rec'd:** \_\_\_\_\_  
**Original to CB**

## A WELCOME TO NEW BETH SHALOM MEMBERS (BRUCHIM HABAYIM)

Please take a moment to welcome the following new member to the Beth Shalom Community:

- |   |  |
|---|--|
| <ul style="list-style-type: none"> <li>◆ Ben Wahl - Ben was a USY Advisor at Beth Shalom for a number of years</li> <li>◆ David Zimmerman - You may recognize him from 24 Hour Fitness at Northgate</li> <li>◆ Adam Kuten &amp; K. Mireille Chae - Adam &amp; Mireille have two little ones, Samuel who is 2-years-old and their newborn, Talia</li> <li>◆ Carl &amp; Brianna Sayres - you have probably seen this</li> </ul> | <ul style="list-style-type: none"> <li>◆ family around CBS for months now; Carl leyns Torah beautifully; they have two boys, Alex is 5-years-old and Matthew is 3-years old</li> <li>◆ Andrew &amp; Courtney Savin - Welcome back the Savin family to Beth Shalom! They still live in Boise, Idaho, but Beth Shalom is their Jewish home, so they are planning Asher's Bar Mitzvah and it will take place at CBS</li> <li>◆ Deborah Gordon - Debbie schleps up from Tukwila, just like the Shusterman family and we love having her with us</li> </ul> |
|---|--|

## ANNIVERSARIES, BIRTHDAYS & B'NAI MITZVAH Mazel Tov to All

<b>ANNIVERSARIES</b>		Larry Jordan	2/9	Inna Lacker	2/18
Paige Chapel &		Joey Strauss	2/9	Kelli Carroll	2/19
	Rhiannon Lombard	2/16	Michelle Brot	2/10	Jonah Cohen
Amy Stephson &		Jacob Fein	2/10	Eliana Nagel	2/19
	Brian Rapalee	2/19	Julian Judelman	2/10	Louis Friedkin
<b>BIRTHDAYS</b>		Howard Klein	2/10	Michael Harding	2/20
Carolyn Cohen	2/1	Margot Kravette	2/10	Peter Shier	2/20
Rachel Coskey	2/1	Karyn Levie	2/10	Zoe Mesnik-Greene	2/21
Galit Ezekiel	2/1	Adam Low	2/10	Gabriel Rosenbloom	2/21
Lilah Melzer	2/1	Sara Moldaver	2/10	Judy Rosenfeld	2/21
Suzanna Shapiro	2/1	Sloane Goldberg	2/11	Gabriella Sanchez-Stern	2/21
Susan Monas	2/4	Israella Kleiman	2/11	Rachel Garcia-Grossman	2/22
Ron Schneeweiss	2/4	Marvin Stern	2/11	Neeloufar Gharavi	2/22
Natan Lubow	2/5	Cezanne Garcia	2/12	Victor Lamin	2/22
Steven Alter	2/6	Diana Schneeweiss	2/13	David Rapp	2/22
Talia Ashkenazy	2/6	Micah Brodsky	2/14	Joey Aprin	2/23
David Bensadon	2/6	Sophia Halford	2/14	Abigail Bernhard	2/23
Max Bettman	2/7	Zachary Katz-Springer	2/14	Michael Lubow	2/23
Alan Bornstein	2/7	Joshua Kiperstzok	2/14	Isaac Morgensztern	2/23
Richard Fulton	2/7	Robert Hovden	2/15	Grace Rivkis	2/23
Mary Signer Meikle	2/7	Philip Nurick	2/15	Matthew Kerner	2/24
Aaron Spiro	2/7	Belinda Judelman	2/16	Stefan Sharkansky	2/24
Jordan Sprio	2/7	Michelle Schriro-Bettman	2/16	Irene Basloe Saraf	2/25
Miriam Alloway	2/8	Danny Strauss	2/16	Sarah Kaplan Shalinsky	2/25
Rachel Jacobsen	2/8	Paul Berkelhammer	2/17	Edith Horn	2/26
Sam Schroeter	2/8	Joshua Goldfarb	2/17	Freya Brier	2/27
Hilary Bernstein	2/9	Eden Goldman	2/17	Shira Zucker	2/27
Kim Isaac	2/9	Adam Bensimon	2/18	Roberta Jordan	2/29
Kiri Jacobsen	2/9	Michael De Haan	2/18		

### An Evening of Hands-On Art with Three Artists from Israel Saturday, 2/11 from 7:15-9:30pm at Beth Shalom

Loosen your creative juices and learn how to do Mandela drawings on canvas. Mandela art is an East Indian art that Jews from India have brought to Israel.

No charge for this **Adults Only** event. Due to limited space, pre-registration is required.

Register at [www.bethshalomseattle.org](http://www.bethshalomseattle.org) on our calendar.

The artists have been brought here as part of the Jewish Federation of Greater Seattle's partnership with the town of Kiryat Malachi and the area of Hof Ashkelon. To learn more about the partnership, please go to: <http://tips-kmha.blogspot.com>.



# EVENTS IN MEMBERS LIVES

## MEMBERS IN SHLOSHIM OR YUD BET HODESH

### MEMBERS IN SHLOSHIM OR YUD BET HODESH

- י Betsy Deutsch, for her father, Cyrus Rubin, z"l (24 Kislev)
- י Grace Rubin, for her husband, Cyrus Rubin, z"l (24 Kislev)
- י Joel Erlitz and Marc Erlitz, for their father, Stanley Erlitz, z"l (18 Kislev)
- י Jeff Miller, for his mother, Ruth Miller, z"l (7 Kislev)
- י Rick Kustina and Frank Kustina, for their mother, Helen Kustina, z"l (26 Heshvan)
- י Michelle Weinberg, for her father, Milton Lubow, z"l (9 Heshvan)
- י Ellen Spear, for her father, Howard Arbetter, z"l (19 Tishrei)
- י Sharona Gordon, for her father, Robert Gordon, z"l
- י Joe Orzech, for his father, Ze'ev Orzech, z"l (15 Elul)
- י Rita Edelson, for her son, David Harris Edelson, z"l (8 Elul)
- י Carolyn Bernhard, for her mother, Beverly Grashin, z"l (24 Tammuz)
- י Jeff Gillman, for his mother, Vicki Gillman, z"l (13 Tammuz)
- י Jon Zimmerman, for his father, Neal Zimmerman, z"l (13 Sivan)
- י Miryam Kabakov, for her mother, Ceil Kabakow, z"l (10 Sivan)
- י Leah Lemchen, for her mother, Samantha Ripley, z"l (4 Sivan)
- י Jeff Miller, for his father, Phillip Miller, z"l (23 Iyar)
- י Judy Rosenfeld, for her father, Benjamin Rosenfeld, z"l (20 Nisan)
- י Steve Marx, for his father, Arthur Julius Marx, z"l (10 Nisan)
- י Rhona Feldman, for her mother, Min Feldman, z"l (24 Adar II)
- י Elizabeth Braverman, for her mother, Jane Braverman, z"l (22 Adar II)
- י Murray Raskind, for his father, Benjamin Raskind, z"l (17 Adar II)
- י Gloria Goldstein, for her husband, Norton Goldstein, z"l (23 Shevat)
- י Nancy Cooper, for her father, Gerald Cooper, z"l (22 Shevat)
- י Jonathan Solovy, for his father, Jerold Solovy, z"l (14 Shevat)
- י Lori Safer, for her father, Barney Cohn, z"l (23 Tevet)

## REFUAH SHLEMAH

### CBS MEMBERS

- י Tzipura bat David
- י Rolande bat Vivie (Rolande Chesebro)
- י Yeshayahu ben Avraham (Lee Cronbach)
- י Akiva ben Shmuel
- י Benyamin Lev ben Aviiva Ora v'Shmuel Moshe (Julian Silver)
- י Yonah Dov ben Shlomo ha'Levi (Jerry Becker)
- י Freydl Miryl bat Pesha v' Sima

- י Avigdor ben David (Avi Erlich)
- י Masha bat Shaindel
- י Naomi bat Rivka (Isabella Chapman)
- י Baruch Leib Chaim ben Meir (Brent Brown)
- י Yakov ben Fayga (Yakov Koltman)
- י David Henached shel Goldja (Elric Wolfsbruder McCurdy)
- י Yachna Maryam ha'Cohen bat Masha Leah
- י Chisda ben Yonah (Tony Moore)
- י Chizkiyahu Yitzchok Yehoshuah ben Rachel v'Eliezer
- י Yitzchak ben Miriam v'Benjamin (Ira Kalet)
- י Yaffa Tova bat Reuven (Jane Fein)
- י BatSheva bat Sofia
- י Ita bat Taube (Inna Lacker)
- י Aviella Bara bat Nechama Raisel v'Shlomo Vared (Susan Aylesworth)
- י Malka bat Leah v'Rav Avram (Mildred Rosenbaum)

### RELATIVES of Members

- י Dorothy Saran, mother of Craig Saran
- י Shoshana bat Irene (Susan Markowitz), cousin of Patti Kieval
- י Ezra Zimmerman, nephew of Henry Zimmerman
- י Moshe ben Sarah, father of Nadine Cadesky-Zimmerman
- י Shimon Yitzchak ben Miriam, father of Robert Rothstein
- י Shmuel ben Zahava v'Yehiel Maier, father of Tzachi Litov
- י Zach Reznikoff, nephew of Julie & Mitch Klein
- י Yohanna bat Chaya Risha, relative of a member
- י Ira Weiner, cousin of Kayla Weiner
- י Gittel bat Sonia, sister of Brad Spear
- י Julie Mckibben, sister-in-law of Corey Salka and Lisa Orlick-Salka
- י Helene Pine, cousin of Corey Salka
- י Zaev Yaakov ben Gittel (William Greenberg), father of Linda-Jo Greenberg
- י Wendy Horwitch, sister of Carrie Horwitch
- י Lori Abrams, sister of Eileen Klein

### FRIENDS of Members

- י Yehuda Dov Ha'Cohen ben Malkah, (Ernest Cohen), friend of Sharon Greenberg
- י Larry Zolton, friend of Patti Kieval
- י Rabbi Joshua Stampfer, friend of Congregation Beth Shalom and Camp Solomon Schechter
- י Tova Talya bat Yetta Davida v'Herschel Hayyim, friend of Paul Schwartz
- י Rachel bat Gavriela v'Yehuda (Andrea Stern), friend of Patti Kieval
- י Claudia Jauregui, friend of Linda Portnoy
- י Yosef ben Zlata, friend of the Slosberg family
- י Pesach Chaim ben Sara, friend of Carolyn Cohen & Scott Cline
- י Rachel Berkson, friend of Steve Greene
- י Krista Conner, friend of Kayla Weiner
- י Oren ben Michal, friend of Brad Spear
- י Hugh Murdoch, friend of Michael de Haan
- י Michael Gallagher, friend of Kayla Weiner

- י Peter Langmaid, friend of Kayla Weiner
- י Ronie Rosenbaum, friend of Lisa Orlick-Salka
- י Gloria Borges, friend of Louis Friedkin
- י Congresswoman, Gabrielle Giffords

### MILESTONES

- Y Mazel Tov to Caleb Kleiman and his family on becoming Bar Mitzvah
- Y Mazel Tov to the Seattle Jewish Community School, who was just awarded a \$25,000 Challenge Award from the Partnership for Excellence in Jewish Education (PEJE)

### TODDAH RABAH

- Y E. Camins Bretts, for being our Shabbas Chef and hir helpers, Michele Yanow, Karen McGonigle, Sheryl Kipnis, Cezanne Garcia
- Y Joanna Gerber, for helping out in our office
- Y Extra special thank you to Louis Jansson, for taking photos of all the yardwork helpers from two weeks ago - you will see the photos in an issue of the Ruach soon
- Y Hannah Cohen-Cline, for being our Shabbas Chef and her helpers, Nicole Haber, Sam Beatty, Noah Cohen-Cline, Wendy Katz, Mark Berman and Aviyah Kurtz
- Y Jackie Kallay, for volunteering in the ECC
- Y Vladimir Sheynkman & family and Elizabeth Braverman, for making latkes for Prozdor and the ECC
- Y Shabbas Chef, Rachel Jacobson, for preparing Kiddush with her helpers, Joel Goldstein, Hannah Cohen-Cline, Sam Portera, Joel Freedman, Maxine Alloway, John Schochet, Mike Jolson & Shoshanna Barnett, Nicole & Natanya Haber and Neelz Gharavi & Greg Touchton

- Y Donald Kronenberg, for raking up all the leaves in the driveway

### Hanukkah Party volunteers

- Y Cooks - Vladimir and Olga Sheynkman, Ben and Sam Sheynkman, Inessa and Alex Arons, Elizabeth Braverman, Sara Moldaver and Mark Berman
- Y Set up - Alice Kaderlan
- Y Decorators - Amital Orzech and Claire Gonder
- Y Activity Facilitators - Ezra and Jacob Glickman, and Amital Orzech
- Y Clean up - Yakov Koltman, Trudy and Ciona Antolin, and Gena Shapiro
- Y Music - Harvey Niebulski, Brad Spear, Jay Krulewicz and Thadeus Spade

*(Continued on page 13)*

## EVENTS IN MEMBERS LIVES

*(Continued from page 12)*

- Y Israella & Sid Kleiman, for Hosting Kiddush
- Y Michael Krasik, for fixing our front doors
- Y Jordan Gussin and Stan Zeitz, for working on the pillars between the Sanctuary and the Social Hall
- Double Chai Toddah Rabahs -**
- Y Development Team: Andrew Cohen, Jill Cohen, Harry Goldman: co-chair, Sharon Perlin: co-chair, Ron Schneeweiss, Peter Shapiro & Mark Stiefel
- Y Table Host Recruitment: Ameer Sherer
- Y Decorations: Iris Brumer
- Y Audio-Visual: Daniel Markowitz
- Y Set Up / Clean Up Volunteers: Brumer family, Coskey family, Wendy Katz, Katz/Lieberman family, Lamin family, Levy family, Light family, Redrup/Glickman family, Rosenbloom/Zaiman family, Shusterman family and Deb Wahl
- Y Music: To the 6th graders who sang so beautifully at the Brunch: Dora Aprin, Teddy Berman, Asaph Brumer, Rachel Coskey, Abbie Glickman, Gabriella Green, Sarah Katz, Mark Lamin, Gabriel Levy, Ana Light, Juliana Sherer, Jules Shusterman and Hannah Wahl and to Stewart Shusterman for accompanying them on guitar

**A SPECIAL THANKS TO ALL OF OUR VOLUNTEERS WHO GENEROUSLY DEVOTE THEIR TIME TO THE SHUL CONSISTENTLY!!**

## CONTRIBUTIONS

### Adult Education

Carol Reynolds

In memory of Ken Reynolds, z"l

Terry Damm

For Joe Orzech, in memory of Ze'ev Orzech, z"l

### Double Chai Plus Chavurah

Anonymous

In honor of Tzachi Litov, Marjie Cogan, Ron DeChene, Robert Hovden and Beth Huppin

Susan & David Adler

Kate & Joel Altus

Jerry & Dorothy Becker

Rabbi Borodin

Andrew Cohen & James Packman

Sidney & Francine Cohen

Suzanne Cole

Lisa & Warren Fein

Debra & Douglas Glazer

Joel Goldstein & Rachel Jacobson

Debra & Jordan Gussin

Pat Hurshell-Reinert & Otto Reinert

Ellis & Vera Kantor

Gail Katz & Henry Liebman

Issy & Sid Kleiman

Julie & Mitch Klein

Jesse Kleinman

Michael Krasik

Joel & Marcy Migdal

Jeff Miller & Joan Lite Miller

Tony Moore

Philip Nurick & Liora Minkin

Rebecca & Matthew Phelps

Yiscah Smith

Ellen & Brad Spear

Debi Vans Evers &

Michael Bottenfield

Stan & Nancy Zeitz

### General Fund

Amy Stephen & Brian Rapalee

In honor of Michael Madwed, for a job well done

In honor of Aviv Litov's Bar Mitzvah

Nancy Zeitz

In memory of Harold Leighton, z"l

Mary Signer Meikle

In memory of husband, David Signer, z"l

Bruce & Ilene Silver

In honor of Gigi & Jules Silver

Robert Seidenstadt

Debby Kerdeman & Dave Tarshes

For Betsy Deutsch & Grace Rubin, in memory of Cyrus Rubin, z"l

For Alan Rodan, in memory of Edith Herskovits, z"l

Mark & Sheryl Stiefel

In honor of the engagement of Jacob Gown & Debbie Cohen

Sara & Bob Kupor

For Joel & Marc Erlitz, in memory of Stanley Erlitz, z"l

For Joe Orzech, in memory of Ze'ev Orzech, z"l

Gregory & Bella Korshin

In memory of grandfather, Vladimir Krikunov, z"l

Andrew Cohen & James Packman

For Alan Rodan, in memory of Edith Herskovits, z"l

For Wally Kegel, in memory of Katie Kegel, z"l

For Julian Judelman, in memory of Esther Judelman, z"l

Simon & Risha Dadoun

In honor of Alexander Dadoun's Bar Mitzvah

Robert & Deborah Isgur

For Betsy Deutsch, in memory of Cy Rubin, z"l

For Julian Judelman, in memory of Esther Judelman, z"l

For Wally Kegel, in memory of Katie Kegel, z"l

Jane Stiefel

In memory of uncle, Ernest Stiefel, z"l

Elaine & Herbert Selipsky

For Wally Kegel, in memory of Katie Kegel, z"l

Susan Monas

In memory of my mother, Lillian Monas, z"l

For Betsy Deutsch & family, in memory of Cy Rubin, z"l

For Jeff Miller, in memory of Ruth Miller, z"l

Mazal Tov to Aviv Litov & his family on the occasion of his Bar Mitzvah

Mazal Tov to Coby Antolin & his family on the occasion of his Bar Mitzvah

Mazal Tov to Amram Migdal & Becca Hathaway, on their Aufruf and Chuppah

For Joel & Marc Erlitz, in memory of Stanley Erlitz, z"l

For Alan Rodan, in memory of Edith Herskovits, z"l

For Wally Kegel, in memory of Katie Kegel, z"l

For Julian Judelman in memory of Esther Judelman, z"l

*(Continued on page 14)*

## CONTRIBUTIONS

*(Continued from page 13)*

### Kiddush Fund

Linda Portnoy

For Jeff Miller, in memory of Ruth Miller, z"l

Peggy Mesnik

In memory of Morris & Ceil Mesnik, z"l

Sid & Francine Cohen

In memory of mother, Anne Cohen, z"l

In memory of mother, Pearl Richlen, z"l

### Mitzvah Corps Fund

Riva Zeff & Yaakov Medrash

For Jeff Gillman, in memory of Vicki Gillman, z"l

Carol & Brent Brown

Shira & Ross Bettinger

In appreciation of Judith Mentzer & Kathryn Bern's many deeds of gamilut chasadim

The O'Quin family

In appreciation of Ron DeChene & Robert Hovden

In appreciation of Ross & Shira Bettinger

Marilyn Bierman

In memory of mother-in-law, Bella Bierman, z"l

Jerry & Dorothy Becker

In memory of mother, Josephine Becker, z"l

### New House Fund

Jonathan Solovy & Stacey Fisher

### Rabbi's Discretionary Fund

Judith & Mark Benjamin

In honor of Neelz & Greg's Chuppah

The O'Quin family

In honor of Rabbi Borodin

Dorothy & Jerry Becker

For Grace Rubin in memory of Cyrus Rubin, z"l

Marion Blumberg

Mark & Sheryl Stiefel

In honor of Rabbi Borodin officiating at Elana & Alex' wedding

Michelle Weinberg &

Stephanie Glickman

In appreciation of Rabbi Borodin

Hannah & Gabriel Berson

In appreciation of Steve Katz

Norm & Isabella Chapman

In memory of brother, Harold Chapman, z"l

### Religious School Fund

The O'Quin family

With gratitude to HaShem

### Social Action Fund

Joanna & Lane Gerber

In memory of grandparents, Yetta & Jake Strasberg, z"l

Robert & Deborah Isgur

For Betsy Deutsch, in memory of Cy Rubin, z"l

For Julian Judelman, in memory of Esther Judelman, z"l

For Wally Kegel, in memory of Katie Kegel, z"l



# SJCS GALA 2012

## 20 Years & Growing Strong

Sunday, February 12th

5:30 pm

Shoshana Stombaugh  
Honoree

Danielle Yancey  
SJCS Kaplan Award Winner

Cathy Simon  
Chairperson

For reservations and tributes, contact [development@sjcs.net](mailto:development@sjcs.net)



Shoshana Stombaugh



**SEATTLE JEWISH COMMUNITY SCHOOL**

[www.sjcs.net](http://www.sjcs.net)  
206.522.5212

## Updates



### SAVE THE DATE

#### Meet Nigel Savage - founder of Hazon Shabbat, February 25

Nigel Savage is the founder of Hazon (Hebrew for "vision"), a Jewish nonprofit based in New York City that runs the largest faith-based community-supported agriculture program, or CSA, in the country. The group pairs synagogues with nearby farmers to provide locally grown food for more than 4,000 families, and donates any leftovers to the poor—this year it expects to give away 30,000 pounds' worth.

On Saturday February 25, he will be giving the D'var Torah at CBS on the subject of "What's happening in the Jewish Food Movement and the application of Jewish values and ethics in the realm of food".

He will then lead a discussion and teaching at 1:15pm in the Beit Midrash on "Jewish Environmentalism: What's to be done today?"

If you would like to read an article about Nigel from O Magazine, here is the link:

<http://www.oprah.com/world/Religious-Leaders-Who-Are-Eco-Activists/4>

## A Double Mitzvah! Support Israel and Our Synagogue

**For every tree you plant, all purchases from the JNF store and any donation you make to Jewish National Fund, JNF will donate 20% back to our synagogue and another 5% to United Synagogue to support congregational Israel programs.**

Honor a friend or a loved one. Plant a tree in Israel.  
Memorials · Births · Birthdays · Anniversaries  
B'nai Mitzvah · Weddings · Retirements · New Homes

Go to our synagogue website and click the **JNF/United Synagogue** button. Credit to our synagogue will not be given if you go directly to the Jewish National Fund website and bypass our web link. You can also place your order by calling **1-800-542-TREE** and mentioning **United Synagogue**.



A partnership of JNF and The United Synagogue of Conservative Judaism



# SERVICE SCHEDULE FOR FEBRUARY 2012 - SHEVAT~ADAR 1 5772

Members of the Beth Shalom community lead worship services at CBS. If you have synagogue skills and wish to participate, call the CBS Office, 206-524-0075.

## CBS DAILY MINYANS

Please support the minyan by attending on a regular or even irregular basis one or more days a week. The minyan does not meet on Festival days. The minyan (Monday – Friday) starts at 7:00AM on all American holidays except Thanksgiving, December 25<sup>th</sup>, New Year's Day, Memorial Day, Independence Day and Labor Day when it will meet at 9:00AM.

- ✓ Monday through Friday mornings: 7:00-7:45am (Beit Hamidrash).
- ✓ Sunday mornings: 9:30-10:15am, (Beit Hamidrash)
- ✓ Monday Evening Minyan: 7:30-8:00pm, (Beit Hamidrash)
- ✓ Thursday Evening Minyan: 7:30-8:00pm, (Beit Hamidrash or Sanctuary)

For Torah Readings on Mondays and Thursdays, add ten to fifteen minutes to services.

## YESHAR KOACH TO OUR SERVICE LEADERS SINCE THE LAST RUACH

**Ashrei Club:** Kayla & Abe Braverman, Marcus Greene, Asaph Brumer, and Maya Kintzer

**Daveners:** Shira Orzech, Jason Kintzer, Michael Madwed, Danielle Yancey, Carl Sayres, Michele Yanow, Ariella Kleiman, Steve Greene, and Rabbi Stuart Light

**Leyners:** Mitch Dernis, Caleb Kleiman, Jonathan Kurland, Linda-Jo Greenberg, Brenda Kurland, Alison Sands, Coby Antolin, Nate Bensimon, Phillip Wagenaar, Annette Peizer, Marci Greenberg, and Shoshanna Barnett

**Haftora & Megilah:** Caleb Kleiman, Freya Brier, Sharon Greenberg, Teddy Rothman, and Marilyn Meyer

**Gabbai Rishon & Shenni:** Sam Perlin, Liat Perlin, Sharon Greenberg, Shoshanna Barnett, Nance Adler, Joel Goldstein, Michael Madwed, Jacob Rodan, and Brenda Kurland

**Gabbaim:** Margot Kravett, Alison Sands, Bob Low, Amy Stephson, Alan Rodan, Shelly Crocker, Rochelle Roseman, Karen Binder, Jordan Gussin, and Lyle Margulies

**Greeters:** Brad Spear, David Barrett, Ron DeChene, Judith Mentzer, Allen Gown, Kevin Coskey, Sheryl Kipnis, Rik Katz, Paul Schwartz, Michael Madwed, Karen Madwed, Pat Hurshell, Mark Benjamin, Rhian Lombard, and Paige Chapel

**Minyan Leaders:** Ellen Goldblatt, Lori Safer, Linda-Jo Greenberg, Sam Perlin, Rhona Feldman, Hannah Cohen-Cline, Nance Adler, Rachel Jacobson, Ruth Etzioni, Eyal Preis, Lynn Katz, Yoni Kintzer, Caleb Kleiman

**Kiddush Sponsors:** Antolin Family, Ari & Pamela Pernick, Kleiman Family

---

**Join us for a  
Shabbat Shirah  
Hebrew Sing-a-long  
with Ruth Etzioni  
Saturday, February 4th  
1:15pm in the Beit Midrash**



**CANDLIGHTING AND THE WEEKLY KABBALAT SHABBAT MINYAN  
(Friday Evening Services): Beit Hamidrash**

The regular Kabbalat Shabbat services last approximately one hour. The service is spirited with the beautiful melodies of Kabbalat Shabbat including L'cha Dodi and Yedid Nefesh. After services, participants return home for Shabbat dinner. Shabbat hospitality will be available. Children are welcomed and treasured. If you wish to help lead services, to offer home hospitality after services, or simply to participate on a regular basis, please contact Paul Schwartz at [kabbalatshabbat@bethshalomseattle.org](mailto:kabbalatshabbat@bethshalomseattle.org).

Date	Kabbalat Shabbat	Candlelighting	Programming	Havdallah
February 3-4, 2012	5:30 PM	4:55 PM	Hospitality Shabbat	5:56 PM
February 10-11, 2012	5:30 PM	5:06 PM	Song Lover's Shabbat	6:07 PM
February 17-18, 2012	5:30 PM	5:17 PM	Kid's Program	6:18 PM
February 24-25, 2012	5:30 PM	5:27 PM	Study Shabbat	6:29 PM

**SHABBAT MORNING SERVICES: Main Sanctuary at 9:30am - 12:00pm**

Shabbat Morning Dates & Portion	Concurrent Services	B'nai Mitzvah, Sermon Topics and Special Occasions
February 4: Beshalach Exodus: 14:15-16:10 Haftarah: Judges: 4:4-5:31	10:00-12:00pm Babysitting Co-op 10:30am FDI, Kids Kehilla 11:00-11:30am Tot Shabbat	
February 11: Yitro Exodus: 18:1-20:23 Haftarah: Isaiah 6:1-7:6; 9:5-9:6	10:00-12:00pm Babysitting Co-op 10:30am FDI, Kids Kehilla 10:30-11:15am Learners Minyan	<b>Bar Mitzvah of Jordan Richmond</b>
February 18: Mishpatim Exodus 22:4-23:19 Haftarah: Jeremiah 34:18-34:22; 33:25-33:26	10:00-12:00pm Babysitting Co-op 10:30am FDI, Kids Kehilla	<b>David Frum speaking about Habitat for Humanity</b>
February 25: Terumah Exodus 26:1-30 Haftarah: I Kings 5:26-6:13	10:00-12:00pm Babysitting Co-op 10:30am FDI, Kids Kehilla	

# 5772 February 2012

## shevat adar

SUNDAY	MONDAY	TUESDAY	WEDNESDAY	THURSDAY	FRIDAY	SATURDAY
<b>JANUARY</b> S M T W T F S 1 2 3 4 5 6 7 8 9 10 11 12 13 14 15 16 17 18 19 20 21 22 23 24 25 26 27 28 29 30 31			<b>1</b> 8 shevat 7:00am—Minyan 6:45pm—Israeli Dancing 6:30-9:15pm—Adult Ed	<b>2</b> 9 shevat 7:00am—Minyan 4:30pm—Prozdor 7:30pm—Evening Minyan	<b>3</b> 10 shevat 7:00am—Minyan 5:30pm—Kabbalat Shabbat Service (Hospitality)	<b>4</b> 11 shevat 9:30am—Shabbat Services 10:00am—Babysitting 10:30am—FDI & Junior Cong. 11:00am—Tot Shabbat 11am—Ashrei for Adults 1:15-2:15pm—Israel Discussion-Sing-a-long w/ Ruth Etzioni 6:30-9pm—PJ HavaDalah <i>Beshalach</i> <b>SHABBAT SHIRAH</b>
<b>5</b> 12 shevat 9:15am—Sunday School 9:30am—Minyan 10:15am—Torah Study 11am—6th Grade Minyan 11am—Stitch & Schmooze (outside CBS)	<b>6</b> 13 shevat 7:00am—Minyan 7:30pm—Minyan	<b>7</b> 14 shevat 7:00am—Minyan 4:15pm—Hebrew School 7:00pm—Adult Ed	<b>8</b> 15 shevat 7:00am—Minyan 6:45pm—Israeli Dancing 6:30-9:15pm—Adult Ed	<b>9</b> 15 shevat 7:00am—Minyan 4:30pm—Prozdor 7:30pm—Evening Minyan 7:30pm—Beit Midrash Tamud	<b>10</b> 17 shevat 7:00am—Minyan 5:30pm—Kabbalat Shabbat Service (Song Lover's)	<b>11</b> 18 shevat Bar Mitzvah of Jordan Richmond 9:30am—Shabbat Services 10:00am—Babysitting 10:30am—FDI & Junior Cong. 10:30am—Learner's Minyan <b>Yitro</b>
<b>12</b> 19 shevat 9:15am—Sunday School 9:30am—Minyan 10:15am—Torah Study	<b>13</b> 20 shevat 7:00am—Minyan 7:30pm—Minyan	<b>14</b> 21 shevat 7:00am—Minyan 4:15pm—Hebrew School 7:00pm—Adult Ed.	<b>15</b> 22 shevat 7:00am—Minyan 6:45pm—Israeli Dancing 6:30-9:15pm—Adult Ed	<b>16</b> 23 shevat 7:00am—Minyan 4:30pm—Prozdor 7:30pm—Evening Minyan	<b>17</b> 24 shevat 7:00am—Minyan 5:30pm—Kabbalat Shabbat Service (Parallel Kid's Prog)	<b>18</b> 25 shevat 9:30am—Shabbat Services 10:00am—Babysitting 10:30am—FDI & Junior Cong. 11am—Ashrei for Adults <b>Mishpatim</b> <b>SHABBAT SHEKALIM</b>
<b>19</b> 25 shevat No Sunday School 9:30am—Minyan 10:15am—Torah Study	<b>20</b> 27 shevat OFFICE CLOSED 7:00am—Minyan	<b>21</b> 28 shevat 7:00am—Minyan	<b>22</b> 29 shevat 7:00am—Minyan 6:45pm—Israeli Dancing 6:30pm—Adult Ed	<b>23</b> 30 shevat 7:00am—Minyan 7:30pm—Evening Minyan 7:30pm—Beit Midrash Tamud	<b>24</b> 1 adar 7:00am—Minyan 5:30pm—Kabbalat Shabbat Service (Study)	<b>25</b> 2 adar 9:30am—Shabbat Services 10:00am—Babysitting 11am-12pm—Ashrei for Adults 10:30am—FDI & Junior Cong. 1:15-2:15—Midot & Mitzot <b>Terumah</b>
<b>26</b> 9 adar 9:15am—Sunday School 9:30am—Minyan 10:15am—Torah Study 7:00pm—Rosh Chodesh Women's Group (outside CBS)	<b>27</b> 4 adar 7:00am—Minyan 7:30pm—Minyan	<b>28</b> 5 adar 7:00am—Minyan 4:15pm—Hebrew School 7:00pm—Adult Ed.	<b>29</b> 6 adar 7:00am—Minyan 6:45pm—Israeli Dancing 6:30-9:15pm—Adult Ed	<b>ROSH CHODESH</b>	<b>ROSH CHODESH</b>	<b>MARCH</b> S M T W T F S 1 2 3 4 5 6 7 8 9 10 11 12 13 14 15 16 17 18 19 20 21 22 23 24 25 26 27 28 29 30 31
						<b>LEAP YEAR DAY</b>



Please return form to:  
 Congregation Beth Shalom  
 6800 35th Ave NE  
 Seattle, WA 98115  
 Fax: 206-525-5095

## Congregation Beth Shalom Mail in Tzedakah Form

You may also call us at 206-524-0075 and make your donation via credit card.

### 1. DONOR INFORMATION

Name: \_\_\_\_\_

Address: \_\_\_\_\_

City, State, Zip: \_\_\_\_\_

Acknowledgement cards are mailed to the honoree or the family of those memorialized, and are also listed in our monthly newsletter, the *Ruach*.

*To minimize the use of synagogue resources please send my acknowledgement via e-mail to:*

\_\_\_\_\_

### 2. GIFT INFORMATION

My gift is (choose one)     In honor     In memory     In honor of an Aliyah

of \_\_\_\_\_

*I would like a gift acknowledgement sent to (other than myself):*

Name: \_\_\_\_\_

Address: \_\_\_\_\_

City, State, Zip: \_\_\_\_\_

PLEASE USE MY DONATION TO SUPPORT :

**General Operating Fund**

All donations to the General Fund help maintain a balanced budget.

**A Special Fund:**

- |   |   |
|---|---|
| <input type="checkbox"/> Adult Education Fund         | <input type="checkbox"/> Campership                 |
| <input type="checkbox"/> Cemetery Fund                | <input type="checkbox"/> Endowment Fund             |
| <input type="checkbox"/> Israel Travel Fund for Youth | <input type="checkbox"/> Joey Wes Library Fund      |
| <input type="checkbox"/> Kiddush Club                 | <input type="checkbox"/> Kitchen Fund               |
| <input type="checkbox"/> Landscape Fund               | <input type="checkbox"/> Library Fund               |
| <input type="checkbox"/> Mitzvah Corps Fund           | <input type="checkbox"/> Prayer Book Fund           |
| <input type="checkbox"/> Religious School Fund        | <input type="checkbox"/> Rabbi's Discretionary Fund |
| <input type="checkbox"/> Social Action Fund           | <input type="checkbox"/> Torah Fund                 |
| <input type="checkbox"/> Young Adult/3rd Friday Fund  | <input type="checkbox"/> Youth Fund                 |

### 3. PAYMENT INFORMATION (Note: there is an additional 3% charge on all credit cards)

Enclosed is my gift of \$ \_\_\_\_\_ via (choose one)  Check     Visa     Mastercard

Card # \_\_\_\_\_ / \_\_\_\_\_ / \_\_\_\_\_ / \_\_\_\_\_    Exp. \_\_\_\_\_

Card Verification # \_\_\_\_\_

Signature of Cardholder \_\_\_\_\_    Date \_\_\_\_\_

Thank you for your support of Congregation Beth Shalom!

Congregation  
Beth Shalom

6800 35th Ave NE  
Seattle, WA 98115

tel 206.524.0075

fax 206.525.5095

email: [info@bethshalomseattle.org](mailto:info@bethshalomseattle.org)

[www.bethshalomseattle.org](http://www.bethshalomseattle.org)



Non-Profit Org.  
U.S. Postage  
PAID  
Seattle, WA  
Permit #802

*Voted Best Congregation in Town!*

## Pajama Havdallah Lights Up the Night!



Families with preschool and school age children are invited to join us in their pajamas for a special Havdallah celebration including:

- Crafts! Cookies!
- Radical Reactions program from the Pacific Science Center!
- Tons of friends!
- And More!

**WHEN:** February 4, 2012, 6:30—8:30pm

**WHERE:** Congregation Beth Shalom:

6800 35th Ave NE, Seattle, WA 98115

This is a FREE event, but we do ask that you please

RSVP by 02/2/12 to Irit Eliav, at  
[IritEliav@bethshalomseattle.org](mailto:IritEliav@bethshalomseattle.org).

