



6800 35th Ave NE
Seattle, WA 98115
206.524.0075

Ruach



Congregation Beth Shalom • Voted in JT News—Best Congregation for 2010!

March 2011 • Adar I–Adar II 5771

Volume 43, Issue 7

MESSAGE FROM THE RABBI

My Sabbatical Plans

I am incredibly grateful for this congregation's vision in recognizing the importance of sabbaticals for rabbis as an opportunity to recharge, learn and grow. I am very appreciative of the opportunity to be on sabbatical from March 1 - June 1 and wanted to share with you my plans for these three months.

My sabbatical plans include three different segments. First, the girls and I will be travelling to Israel for almost a month, spending time in Haifa, Jerusalem and Tel Aviv. Israel is constantly changing and I am excited to have time to get better in touch with the realities of Israel today, spend time living, breathing and eating in Israel.

I'm delighted to be able to be in Israel for Purim and am planning on spending Shabbatot with different Masorti (Conservative) communities in Israel. I also relish the opportunity to introduce Naomi and Alexandra to Israel and experience Israel through their eyes.

From Israel, we will spend a month in Toronto with my parents, including being there for Passover. I am very grateful for the opportunity to spend seder with many of my relatives from the northeast who are travelling to Toronto to be with us. I look forward to being able to do some learning and recharging in Toronto, exploring the vibrant Jewish community of Toronto and for my girls to have time with their extended family.

The third component of the sabbatical is visiting a few different synagogues across the United States that have been on my radar screen for years, but I have never had a chance to experience. I love attending shuls in different communities, watching how they organize and create community, how they create a sense of the sacred within their walls. My hope is that through visiting these communities, and speaking with their rabbis and some of their members, I will further develop my vision and some ideas about questions I have been thinking about with regards to Beth Shalom, in particular questions related to creating community and inclusiveness.

And as a bonus piece, on our way to Israel, I am looking forward to attending a weekend beit midrash program on Jewish environmental and agricultural texts and issues at a educational Jewish farm, called Kayam, outside of Baltimore.

The sabbatical committee, under the leadership of Jeff Gillman, has created a wonderful team covering the different parts of my position in my absence.

Information on who is covering different pieces is available through the office and was in last month's Ruach. We are fortunate to have Rabbi Spicehandler available for pastoral support, counseling and life cycle needs; I encourage you to get to know her and to avail yourself of her wisdom and presence over the next few months. Please be in touch with the office to set up an appointment with Rabbi Spicehandler and see the brief bio of Rabbi Spicehandler in this Ruach.

I look forward to returning recharged to Seattle and Beth Shalom at the beginning of June in time for Family Camp and Shavuot. L'hitraot.



Rabbi Borodick

Shaarei Tikvah: Gates of Hope - A Purim Celebration for People of All Abilities
Sunday, 3/13 from 3–5 pm at CBS
All ages welcome to join the fun! FREE
To discuss special accommodations, please contact us by 3/4 at 206-861-8784 or familylife@jfsseattle.org.



For all the rest of the Purim Activities?
Check out page 8 of this Ruach.

INSIDE THIS ISSUE:

Updates	1-11
PURIM INFORMATION	8
Youth Updates	12
Adult Education	13-15
Anniversaries and Birthdays	16
Events in Member's Lives	16-18
Contributions	18-19
Service Schedule and Calendar	20-22
Tzedakah Form	23

Message from our Interim Rabbi Spicehandler

Mi shenichnas adar marbim besimchah-- once Adar has begun, our joy multiplies. These words, recently recited to welcome Adar I, hold a special meaning for me this year. Adar marks the start of a special three-month journey that we will embark upon together. I approach, with joy, the sacred task of serving as Interim Rabbi for pastoral care during Rabbi Borodin's sabbatical. I have already spent many wonderful shabbatot at Beth Shalom and have been impressed by this dynamic, talented, and healthy community. I look forward to getting to know many of you on a more personal basis as spring progresses.

It is in the nature of things that many of our encounters may be at times of personal sorrow and stress. You may also feel disappointed that Rabbi Borodin, whom you know and love, will be away from Seattle. I hope that you will feel that I am your "Rabbi in Reserve" and that you can come to me for comfort and/or conversation. You can make an appointment to meet with me by contacting Sandy Sloane, the new Lifecycle Coordinator and Rabbi's Assistant, at Beth Shalom. (This is the position previously filled by Kris.)

There will be several opportunities for the congregation to meet me. I'll be the Guest Darshan on March 13th. In the meantime, I'd like to introduce myself briefly.

I grew up in a Reform Zionist Hebraist family in Cincinnati, Ohio, spending a year each in Tehran and Jerusalem with my family during high school. My undergraduate and graduate degrees are from the University of Chicago in French Language and Literature and in Studies in Comparative Literature. I am a graduate of the Reconstructionist Rabbinical College, with special interest in liturgy and Modern Hebrew Literature. I also earned a certificate in Jewish Geriatric Chaplaincy. Following my ordination I spent ten years as Dean of Students and Admissions at the Reconstructionist Rabbinical College where I also taught Modern Hebrew literature in Hebrew.

For the past ten years I have specialized in the interim rabbinate, serving several congregations that wanted to reassess and regroup before selecting a new long-term

(Continued on page 3)

Buy Scrip/Gift Cards For CBS

If you would like to purchase scrip for QFC/Fred Meyer, PCC, and now: Safeway, Albertsons, Home Depot, Starbucks, and ARCO or if you have any questions about the scrip program, please contact Kevin Coskey at (206) 365-2275 or scrip@bethshalomseattle.org, and the CBS Offices at 206-524-0075.

Talya McCurdy & Elric Wolfsbruder McCurdy have graciously volunteered to sell gift cards at shul on Tuesday and Wednesday evenings, from 6:45 to 7:15. So please stop by Beth Shalom then and avail yourself of this excellent opportunity.

CBS 2010-2011 Board of Directors

President Jill Cohen	Vice-President John Schochet	Religious School Committee Chair Tamara Griffin	Harry Goldman Patti Kievall Craig Lawson
President Elect Mark Stiefel	Treasurer Marie Poole	Members at Large: Ruth Etzioni	Debora Rifkin Ron Schneeweiss
Past President Susan Monas	Secretary Amy Stephson	Rhona Feldman Neeloufar Gharavi Jeff Gillman	Howard Shalinsky Peter Shapiro Perry Weinberg

Deadlines:

Articles / Announcements are due in synagogue office by the 10th of each month for the following month's newsletter.

206-524-0075 CBS phone
206-525-5095 CBS fax

Rabbi Jill Borodin
rabbiborodin@bethshalomseattle.org

Tzachi Litov
Executive Director
tzachilitov@bethshalomseattle.org

Irit Eliav
Director of Education
iriteliav@bethshalomseattle.org

Leah Lemchen
Early Childhood Center Director
leahlemchen@bethshalomseattle.org

Carol Benedick
Program Director
carolbenedick@bethshalomseattle.org

Marjie Cogan
Front Office Coordinator
marjiecogan@bethshalomseattle.org

Sandy Sloane
Lifecycle Coordinator
sandysloane@bethshalomseattle.org

Ann Kelly
Asst to the Director of Education
annkelly@bethshalomseattle.org

Michele Stern
B'nai Mitzvah Coordinator
bmitzvah@bethshalomseattle.org

Emma Shusterman
Bookkeeper
emmashusterman@bethshalomseattle.org

Jaen Gomez-Cervantes
Custodian/Handyman

Rimma Lobas
Custodial Attendant

Synagogue office address: 6800 - 35th Ave NE • Seattle, WA 98115 • website: www.bethshalomseattle.org

Updates

RABBI SPICEHANDLER CONTINUED

(Continued from page 2)

rabbi. I am a founding Board Member of the Interfaith Center of Greater Philadelphia with which I remain actively involved. For the past few months I have done volunteer work with the Seattle Jewish Archives which has given me a greater understanding of this fascinating community.

My partner, Jeremy Brochin, and I are in Seattle for the year while he serves as Interim Greenstein Family Executive Director at U. Dub Hillel. This is Jeremy's 36th year in Hillel, the last 23 of which were at the University of Pennsylvania. We have two adult children who live on the East Coast.

I hope that what I have written serves as a prelude to our getting to know each other more deeply over the next few weeks. Please do introduce yourselves on Shabbat and consider making an appointment during the week. I look forward to our time together in the coming months.



Passover Seder Matches

Have extra room at your seder?

Looking for a seder?

Let us know **NOW**.

Call 206-524-0075 ext 2504 or email
carolbenedick@bethshalomseattle.org



SAVE THE DATE!!!

Family Camp

June 3-5, 2011

Camp Solomon Schechter

**.Schmooze with friends!
.Relax, Learn, Celebrate!
.Nourish your body and soul!**



MIDDAH OF THE MONTH FOR FEBRUARY - FAITH (EMUNAH)

vbun t

The target for a life well lived is summed up in the word *wholeness* (*sh'lemut*), about which Rabbi Shlomo Wolbe says: "We seek only our wholeness." Then he guides, "The foundation of wholeness is faith." Without faith, wholeness will elude us.

Alan Morinis writes: "to my way of thinking, the primary question is not whether or not you believe in God, but rather a more empirical issue of where to look to find God. If you know where to look for God, then you have the potential to perceive a reality, and that is a far better foundation for faith than either blind belief or adherence to received opinions."

To build a foundation of faith, then, we need to pay attention to the sorts of glimpses, intuitions and flashes that are the only way in which we can hope to experience something of the presence of God.

How can you grow in faith, or into faith? The doorway to faith is not opened by rational thought. Only through elevated inner experience can one come to faith or

strengthen the faith one has. Through reflection and learning, we may be convinced that there must be more to life than is apparent, but it is only through lived experience that this notion becomes implanted as faith.

Each of us needs to ask ourselves what it is that stands in the way of opening to faith, and what we can do about it. There are many sorts of actions that can be undertaken as a result of faith, and that in the doing can also become a source of faith. This is true of the classic acts of loving-kindness, like giving charity, visiting the sick, clothing the naked, and burying the dead. The same is true of prayer. It is logical to think that living a life by the commandments would demand that faith be in place first; my experience is that living by the commandments fosters and nurtures faith as well. In the end, what is important about faith is that we keep seeking.

Join us for an exploration of *Emunah* in the Beit Midrash on Shabbat, March 26, 2011 from 1:15 – 2:15 pm.

(© copyright Shirah Bell. Adapted from *Everyday Holiness* by Alan Morinis, with permission; all rights reserved worldwide.)

ISRAEL DISCUSSION GROUP, CONTACT: DAVID BRUMER, KATE ALTUS

On March 5, Assaf Nisenboym will speak to the Israel Discussion Group.

Assaf came to Seattle from the Jerusalem office of StandWithUs to be positive voice for Israel in the Puget Sound region, which is considered to be a hot spot of

anti-Israel activities. He is an adept storyteller, and he'll be sharing his personal story of growing up in Israel, as well.

The group meets at 1:15 in the Beit Midrash.

A TRIBUTE TO OUR MANY VOLUNTEERS BY STAN ZEITZ

Congregation Beth Shalom must provide some very basic services - a place of worship, school for our children and opportunities to celebrate B'nai Mitzvah. Without our many volunteers these expectations would be insurmountable. Much of the volunteer work is not seen. The fixing, food prep, weeding, office assist and governance occurs out of sight and without publicity.

Governance includes all the financial, operation, and function of our synagogue. Many congregants take a turn to assume these responsibilities and toil many hours to make things go right. We do delegate the work to good people that we hire but the oversight and responsibility remain with the Board. We do not hire anyone to greet new members, sing at services and continually survey our operation and needs. Someone gets up early each day to lead our weekday minyan. Without adequate leadership and education Judaism's future - our children - will not be our future.

Maintaining building and grounds, the activity I know best, demands the devotion of a lot of people. We fix and

beautify supported with a very limited budget. In fact most of the funds and equipment and material are donated by the congregants who give of their time and sometimes endure uncomfortable weather. Some of the committee members have very important skills but all participate. Not everyone can come the day of a designated yard party so often Liz Labadie, Cindy Hirsch, Kevin Coskey, Lee Cronbach and others come on another day to work independently. This activity has provided opportunity to get to know each other even better. This and all the other possible volunteer work gives excellent chance to meet new friends and get to know some good people very well.

So what do all the wonderful people who volunteer to make our synagogue better get out of this? More than they put in. Surely there is some activity that is attractive for you and will bring great satisfaction and also contribute to the well being of you fellow congregants. Try it – you'll like it!

Stan Zeitz

Updates

FROM THE SOCIAL ACTION COMMITTEE, CONTACT: ROBERT ISGUR/CAROLYN COHEN

Contact: Carolyn Cohen/Robert Isgur at sacchairs@bethshalomseattle.org

This month we learn from Shelly Crocker about **Building Changes**, a non-profit working to end homelessness that many of us are unaware of:

Several years ago, inspired by a Yom Kippur D'var given by Carolyn Cohen, I became interested in doing more to fight homelessness. I learned about King County's Ten Year Plan to End Homelessness and attended my first Housing Advocacy Day. There, I met members of the staff of **Building Changes**, a nonprofit working toward creating lasting structural change that results in an end to homelessness, and soon I found myself on the Board.

Building Changes partners with government entities, private funders and nonprofit service providers to end homelessness. It does not build housing but, rather, creates lasting change through programs and policies pairing housing with social services that connect people experiencing homelessness to public benefits, education and the employment training needed to stabilize their lives. One agency we support in Bremerton, for instance, offers on-site case management to families with multiple issues standing in the way of stability. Our grant to them funds the case manager and the service components.

Our work consists of grant making and evaluation, consulting, technical assistance and training, and, most recently, advocacy and public policy work. **Building Changes** consults, trains, plans, researches and shares best practices that deliver creative solutions to address the underlying causes of homelessness. So many non-profits working to alleviate poverty and homelessness lack appropriate infrastructure to do their work.

Building Changes supports capacity building and provides training and support to nonprofits all around

Washington, and also evaluates the efficacy of its programs and grants. Finally, **Building Changes** advocates at the state and national level to change existing policies and laws that contribute to homelessness, and to obtain funding for innovative programs to end homelessness.

We live in the wealthiest society on earth, and we have the ability to ensure that everyone has a warm, dry place to sleep. As Jews, we are obligated to provide for the poorest among us. **Building Changes** works to build a society where homelessness is no longer tolerated, and where each and every one of us has a place to go. Contact Shelly Crocker for more information or to contribute.

Sign up for CBS Mitzvah Day on Purim, **Sunday, March 20th**, to support Tent City 3 and the Lake City Meal program. See details on page 11 in this month's Ruach and contact Robert Isgur at risgur@broadstripe.net by March 11th to participate.

On **Sunday, April 3rd**, the Social Action Committee invites you to join the Beth Shalom Habitat for Humanity crew working on a construction project at Rainer Vista Housing. Participants must be 16 or older. Come for a morning, afternoon, or full-day shift. For information and to RSVP, please contact Sheryl Kipnis at cbshforh@gmail.com

THANK YOU to the Teen Feed Volunteers: Joan Lite Miller, Chair, Marilyn Meyer, Robert Isgur, Martin Schnitzer, Amy Stephson, Edna Oberman, Shelly Crocker, Jeff Miller, Liz Labadie, Julie Margulies and Beth Huppin

The Teen Feed program is in need of a couple of bakers; if anyone is interested contact Joan Lite Miller at 206-527-6320.



BEIT SHALOM CEMETERY

Purchasing cemetery space during life
- rather than waiting for an emergency -
is a gift to yourself and your family.

More information can be found at the CBS website under "About CBS" and in the in the cemetery packet available in the office.

To receive a cemetery packet, contact:

Tzachi Litov at (206) 524-0075 or tzachilitov@bethshalomseattle.org

MAHZOR LEV SHALEM - CONTINUED FROM BACK PAGE

(Continued from page 24)

Hebrew. Interestingly, certain Hebrew terms which lose their power in English, and are fairly well known, such as the words Mitzvah and Baruch Atah are not translated, so the person reading the English can feel some of the richness of the Hebrew in their prayers. This column also provides transliteration for all the parts of the service which are sung, so English readers can join in the communal singing.

A third column provides historical background to the prayers, Biblical and rabbinic references, and an explanation of the prayers and particular phrases within them. And a fourth column provides poems, meditations and prayers related to the themes of the prayers. For me, these comments help to open up and make accessible the Hebrew prayers on the page.

One of the remarkable things is the breath of contributions to this Mahzor. The pieces in the third and fourth columns come from rabbis, poets, scholars and philosophers from throughout the Jewish world, from the past fifteen hundred years. On the same page, may be a poem from a contemporary Israeli poet and a medieval Jewish Spanish poet. There might be a comment from a 17th century Hasidic rabbi, alongside a mediation of a reconstructionist rabbi – these different voices inspiring us to bring our voices to the page.

And in addition to these four different columns, there are some new versions of prayers written for this mahzor, such as the addition of an alternative Avinu Malkeinu. For me, while I have always found powerful the haunting tuns of Avinu Malkeinu, I have wrestled with the narrowness of the images of God presented in this prayer – which keeps repeating the phrase, Avinu Malkeinu, Our Father, Our King. For me, this ongoing repetition of my relationship to God as Father and King, limits my relationship to God. For me, God plays many diverse roles in this world, and in relation to me, including creator, source of energy, and healer. This mahzor responds to the challenge that the theology suggested by Avinu Malkeinu can be distancing for some and reflect a challenging hierarchical and gendered biased theology, and yet there is still a desire to participate in the

communal singing of this prayer. The authors of this mahzor have written and added an alternative Avinu Malkeinu that has maintained the parts of the prayer that are sung aloud, so everyone can sing together, and in the parts of the prayer that are said quietly, have replaced the repetition of the phrase Avinu Malkeinu with a multitude of different images of God found in Torah and the siddur.

For the past few years I have found our mahzor too off putting, finding it hard to relate to its English, frustrated by the lack of translation and transliteration and lacking in spiritually inspiring readings. I have been wanting a mahzor which will be more inclusive of our whole community, who come together on the high holidays, including the learners who want more explanation, the spiritual seekers who want more meditations and reflections with more contemporary spiritual pieces and the traditionalists who want our traditional texts more clearly laid out. I am grateful that our movement has published a mahzor which will meet the needs of our community (as much as any one book possibly could).

I look forward to our high holidays being enriched through the assistance of a mahzor that will inspire us and more deeply connect us to our tradition and support everything we have been building together.

Thank you for being our partners in bringing this mahzor to our community. My hope is that, like myself and others who have been using it, it will help bring new life to our prayers. (You will be shortly receiving a mailing with more material on the mahzor and details of how we will acquire it for our community).



A WELCOME TO NEW BETH SHALOM MEMBERS

Please take a moment to welcome the following new members to the Beth Shalom Community:

- ◆ **Joshua Nathan & Christy Aberg:** Young couple expecting a baby soon; He is an Obstetrician and she is a Midwife; from the Living Judaism class.

PLEASURE OF YOUR COMPANY EVENTS

Murder Mystery Dinner

Saturday, 3/5 from 7pm the Perlmutter/Douglas home

Join co-hosts Diane Douglas and Steve Perlmutter, Susan Monas and Sam Wineburg for a dinner party and murder mystery game. Assume the role of one of eight worldly characters aboard the last train out of soon to be occupied Paris, June 13, 1940. Enjoy hours of good food, intrigue and suspense. Bring a sense of humor and an investigative mind.

RSVP to susanmonas@msn.com. This event is being sponsored by the membership committee. Suggested donation \$18 per individual or \$36 per couple. Space available on a first come first served basis.

Improv Evening at Beth Shalom Saturday, 3/12 from 7:30pm

Do you have a comedic voice looking for an outlet? Get together with friends old and new for improv games, entertainment, and conversation. Facilitated by Liora Minkin - who, in a past life, performed, directed and taught improv comedy. RSVP to the office at 206-524-0075.

Donations to the Membership Fund are appreciated.

Youth Minyan for Adults Shabbat morning, 3/19 from 10-Noon

Have you ever wondered what happens at youth minyan? After 10 years of exclusive youth-only services, Marci Greenberg is leading a one-time only youth minyan for adults complete with opportunities to take part in services and have infamous youth minyan brownies. If you have ever had a child at Youth Minyan or are planning on having one there in the future--this Youth Minyan is for you! (All children will be escorted back to the main sanctuary.)

Please RSVP to the office at 206-524-0075.

JOIN THE ARMY! [What Army you ask?]

THE ARMY OF VOLUNTEERS IN THE
KITCHEN!

(Ask us about Shabbas Chefs and see what you can do!)

CBS wants YOU!

Judith Benjamin judithbenj@comcast.net or Mark

Berman msbxiv@gmail.com – Shabbas Chefs co-chairs

2011

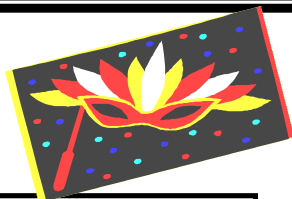


SAVE THE DATE

PURIM Festivities

at

CONGREGATION BETH SHALOM



EREV PURIM CELEBRATION

Saturday, March 19th

7:00pm Minchah & Maariv

7:30-7:50pm Storytime

for families with young children

7:50pm-8:00pm

Costume Parade

8:00pm Havdallah

8:10-8:20pm Klez Katz

8:20-8:50 pm

Not Ready for High Holidays Players'
Purim Play

8:50-9:50 pm

Megillah Reading, and Kids Carnival

9:50-10:15pm

Music and Singing



Due to *Kashrut* and dietary restrictions, we respectfully request that you not deliver *mishloah manot* at the Shul.
Thank you for your cooperation.

PURIM DAY

Sunday, March 20th

9:30-11:15 am

Morning Minyan and Megillah Reading
Religious School is held as usual this morning and is open only to registered students.

11:15 am - 12:15 pm

Light Brunch with Entertainment and Shtick for Adults and Kids

No charge

RSVP for brunch by March 14, 2011

12:15-1:00 pm

Matanot L'Eviyonim
A family tzedakah program—
making gifts for the poor



Everyone is welcome!
Children must be accompanied by a parent.



A COMMUNITY TOOLBOX

Temple Beth Am · Sunday March 13th · 12:45 - 4:00PM

The job of a Jew is
to be a partner
in acting to
make the world
a better place.

Supported by
**EDUCATION
SERVICES**
אגודת חינוך

SAVE THE DATE!

REPAIR THE WORLD will host an afternoon workshop of learning, sharing and growing.

Join Jewish educators and community members as we seek to bolster our commitment to service, justice and action, while developing tools for incorporating these values into daily life.

Presenters will include: **Beth Huppin, Rivy Kletenik, Ken Weinberg** and **Rabbi Will Berkovitz**.

**REPAIR
THE WORLD**
weRepair.org

Additional information to follow.

To learn more about this event, please contact conferences@weRepair.org.

Updates

RABBINIC SABBATICAL ADVISORY COMMITTEE, CONTACT: JEFF GILLMAN

Reminder for Rabbi Borodin's Sabbatical Coverage

Rabbi Spicehandler will be covering pastoral needs 5 hours a week

The rest of the responsibilities will be covered by the following individuals:

- ♦ Shul administration and questions of financial assistance – Tzachi Litov, CBS Executive Director
- ♦ Education – Irit Eliav, Education Director
- ♦ Early Childhood Center – Leah Lemchen, ECC Director
- ♦ Programming – Carol Benedick
- ♦ B'nai Mitzvot – Michal Stern and Jason Kintzer
- ♦ Halachic guidance – Rabbi Stuart Light
- ♦ Kashrut questions – Marci Greenberg
- ♦ Development and general questions – Jill Cohen, CBS Board President

General questions and coordinating Shabbat morning divrei Torah – Jeff Gillman, Chair of RabSabAdCom

For any/all questions, please call the shul office which will redirect you to the appropriate resource person.

Religious School Jewish Book Sale

Want to purchase great Purim and Pesach books for your children?

The Beth Shalom Religious School is selling books from KarBen Publishers. The Religious School receives a percentage of the profits from these sales. If you'd like to check out some of the books that they have available, visit www.karben.com. Then, place an order through Ann Kelly at annkelly@bethshalomseattle.org. Orders due by March 6, 2011.

This is a great and easy way to encourage your children to read Jewish books. For more information, you can also contact Irit Eliav, Director of Education, at Iriteliav@bethshalomseattle.org.

Thank you for supporting our school.

Social Action Committee



Mitzvah Day—March 20th Support Tent City 3 and Lake City Meal Program

This year, Mitzvah Day is designed to facilitate our participation in the mitzvah of matanot l'evyonim—gifts to the poor. As part of the mitzvah, gifts of food or money must be given to those less fortunate, and directly received on the holiday itself.

The Social Action committee is offering opportunities to observe this mitzvah on Purim day, Sunday, March 20th.

- Prepare take-away bags for guests at the Lake City meal program, 12:15-1:00pm in the social hall.
- Shop for items for the Tent City meal during the week prior to Purim. Expenses will be reimbursed by SAC.
- Prepare a meal for residents of Tent City 3. We'll cook at Beth Shalom on Purim afternoon, 1:00-4:00pm.
- Serve the meal at Tent City 3 and visit with residents. This will take place from 5:45-6:30pm.

April 3 Habitat for Humanity®



Beth Shalom's Social Action Committee invites you to join a Habitat for Humanity Crew. We'll work on a construction project at Rainier Vista Housing. Participants must be 16 or older. Come for a morning, afternoon or full-day shift.

For more information and to RSVP, please contact Sheryl Kipnis at cbshforh@gmail.com.

Sandpoint Housing

Watch for upcoming announcements in the month of May regarding opportunities to support residents of Sandpoint Housing.



Call Your State Legislators

The Social Action Committee asks you to contact your state legislators to support two bills on behalf of foster children.

HB 1128 and SB 5245 would extend foster care from age 18 to age 19. CBS volunteers at the Ryther Child Center and at TeenFeed can well imagine 18-year-old foster kids ending up homeless and at TeenFeed. Let's give them a break.

EARLY CHILDHOOD CENTER ENROLLMENT FOR THE FALL

The Beth Shalom Early Childhood Center is currently enrolling for September 2011. For more information or to schedule a tour, contact Leah Lemchen, Early Childhood Director at (206) 985-2516 or leah@bethshalomseattle.org

Our Mission: The Beth Shalom Early Childhood Center is committed to providing excellent quality childcare and preschool for all young children in a safe, nurturing, Jewish environment.

We integrate Judaism and Hebrew into our creative and child centered curriculum. We work to meet the needs of the whole child: socially, emotionally, physically, cognitively and spiritually.

- *Music *Art *Story Time *Dramatic Play *Blocks *Science Exploration *Outdoor Play
- *Holiday Celebrations *Field Trips *much more

- Nurturing, Qualified Staff
- Low Adult to Child Ratios
- Positive Discipline Philosophy
- Creative Curriculum
- Community Oriented
- Jewish Values and Practice



Youth Updates

FROM THE DIRECTOR OF EDUCATION: IRIT ELIAV

Every year, when I read *Megillat Esther* in preparation for Purim, I am always struck by the idea of Esther as the "hidden one." Does her hiding begin when she enters the palace or is it something that happened long before? Midrash teaches that her name, Esther, is a secular one. Her Hebrew name is really Hadassah. Long before she was ever in the palace, she already chose to present her secular self to the world.

Why did she choose to keep her true identity a secret? Prior to Haman, were Jews being persecuted in Persian society? Scholars suggest not. Rather, it is believed that Persians were actually quite tolerant and respectful of other nations. The rebuilding of the Temple had happened under the rule of Cyrus. Yet, the threat was still very real. While we understand Haman's threat to be that of physical destruction, midrash suggests another possibility; it is suggested that the real threat presented by Haman is that of assimilation, or causing Jews to lose their identity, to separate themselves from God. It seems to have been working. God's name is not directly mentioned throughout the entire Megillah. The Jews were drifting away from their traditions and community. Yet, they come back together under the threat presented by Haman when they all fast and fight to protect themselves.

This pattern has repeated itself throughout Jewish history. Jews become assimilated in the nations where they live. Then a threat often appears that reminds us of

YOUTH ACTIVITIES, CONTACT: IRIT ELIAV

From movie nights to USY/Camp Shabbat to a field trip to go ice skating, the youth department had an action packed month! Please join us for upcoming events.

Also, save the date now for our annual Youth Department Spaghetti Dinner on April 17th, from 6:00-8:00. Hope to see you there!

Upcoming Events

3/3 – 7:00-9:00 pm – USY Board Meeting at CBS

3/4-6 – USY Spring Kinnus in Richmond, BC.

3/6 – 2:00-4:00 pm – Kadima goes to Laser Tag

3/26 – 10:00 am to Noonish – Youth Minyan at CBS

3/27 - 1:00-3:30 pm – Youth Department Mitzvah Day program (all groups invited)

4/2 – 7:00-9:00 pm – Kadima's Planetarium and Havdallah at the Pacific Science Center

For more information about any of these events, please contact our fabulous youth advisors:

who we truly are. Much has been written about the threat of assimilation facing the North American Jewish community. Far too many Jewish children have little or no connection to their heritage. Far too many Jews are "hidden", choosing not to share their Jewish identity with the world.

I believe one lesson of Purim is to remind us that we don't need to hide. Esther is able to make the greatest difference when she shares who she truly is with her husband, King Ahasuerus. The greatest strength comes from knowing who you are and being proud of your identity. It is a lesson I strive to teach our children at Beth Shalom; and they are listening. A third grader recently expressed sadness that he missed a day of Religious School while on a family vacation. This happened on a day he was spending at Disneyland! A fourth grader regularly sings the Hebrew version of "Happy Birthday" at celebrations in his secular classroom, where he is one of only two Jewish children. Our high school and college students regularly speak out on their respective campuses on behalf of *Eretz Yisrael*.

We are working tirelessly to teach our children that they don't need to be "hidden." We teach them that they have tremendous strength and courage, especially when they know how amazing it is to be a part of the Jewish people. And when they share who they really are with the world, extraordinary and wonderful things can happen.

Matanot: 2nd & 3rd Graders

David Weingarten, 818-400-6165, David.Weingarten.44@gmail.com; Daniel Hirsty, 805-312-2848, Danielhirsty@gmail.com

Chaverim: 4th & 5th Graders

Melissa Huppin, 509-995-3392, MLHuppin@gmail.com; Ann Kelly, 206-985-2512, annkelly@bethshalomseattle.org

Kadima: 6th - 8th Graders

Joshua Scafe, 248-670-1279, jescafe@gmail.com; Zara Friedman, 206-432-1717, zarasue@gmail.com

USY: 9th - 12th Graders

Matthew Korch, 206-321-1830, korchm@u.washington.edu; Brandon Blake, 206-354-7565, Brandonblake1@gmail.com

For overall youth department questions, please contact: Irit Eliav, Director of Education, at (206) 524-0075 x2503 or Iriteliav@bethshalomseattle.org.

Adult Education

ADULT EDUCATION Spring 5771

Selected Psalms: Honest Words of Comfort, Hope, Gratitude and Pain with Beth Huppin

If the Torah contains God's words to us, then the Psalms contain our words to God. Psalms play a prominent role in Jewish liturgy. They are a source of comfort during difficult times. Come learn about Psalms, and in doing so, learn about prayer, God and why and how Jews have turned to Psalms for generations. No previous knowledge is necessary. Students are asked to bring an openness to asking questions and a willingness to seek answers to the deepest and most difficult questions that we face as humans.

Time: All classes held on Tuesday nights, 8:15—9:15PM

Though this is a year long class, new students are invited to join at the beginning of any section.

Section V— The Use of Psalms in the High Holiday Liturgy

Dates: March 22, 29, April 5, 12, May 3(5 weeks)

Cost: \$50/Members; \$75/Non-members

Feeding the Jewish Soul and the Jewish Body: How and why cooking and eating Jewish foods elevate the Jewish spirit with Jeremy Alk

During the first hour of this course, we will discuss the values inherent in Jewish food prep and eating. During the second hour, well regarded Jewish chefs and cooks will look beyond the primary Jewish soul foods: chicken soup, challah, latkes, hamantaschen, and blintzes, to illustrate these values in the kitchen. One session will be devoted to Hunger and Jewish Life and how poverty affected the choices of food and the spiritual life of our ancestors.

Time: Wednesdays, 7-8pm and 8pm-9:15pm

Dates: March 2, 9, 16, 23, 30 (5 classes)

Cost: 1st hour only: \$50/member, \$75/non-member, 2nd hour only: 90/member, \$135/non-member

Both hours: \$130/member, \$195/non-member

(Tuition includes supply fees for both hours.)

The Washington State Jewish Historical Society has added this class to their growing list of food related events for the Year of Jewish Food. Look for their new cookbook "Yesterday's Mavens, Today's Foodies" to be issued at the end of the year. For more information, please contact lisak@jewishinseattle.org.

Bob Dylan, Kinky Friedman and Other Jewish Rockers: What their lyrics and their lives say about Jewish consciousness and identity in America with Jeremy Alk

Time: Tuesdays, 8:15-9:15pm

Dates: March 1, 8, 15, 22, 29 (5 classes)

Cost: \$50/member, \$75/non-member

Pirkei Avot with the commentary of Me'am Lo'ez with Jessica Smith

Avoth (Pirkei Avot - The Ethics of the Fathers) is the one Talmudic tract that explores the very roots of Judaism. It has long been regarded as a rare treasure of our Torah tradition. Pirkei Avot, as contrasted with the Talmud's discussions around Jewish law, centers our attention directly on the Jew's efforts to improve one's relationship with God and fellow human being. Of all the many commentaries written on Avoth, perhaps the clearest is that written over 300 years ago by Rabbi Yitzchak Magriso of Constantinople, (died 1687) as part of the famed Me'am Lo'ez series. His commentary was written in Ladino and was translated to English in 1978 by David N. Barocas, a Sephardic scholar from Rodosto, Turkey and then edited into a contemporary idiom by Rabbi Aryeh Kaplan. Rabbi Magriso ferrets out the root meaning of the text, and presents it in clear, unambiguous language. Stories, parables and ethical discussions round out his commentary to produce a clear and highly inspirational teaching.

Dates: Wednesdays, February 9-April 13, 2011

Registration is still open!

Time: 8:15-9:15pm

Cost: \$90/Members; \$135/Non-members

**Congratulations to Beth Shalom
for the - Best Adult Education
Program of 2010 - voted in the
JT News Survey**

Learn the Art of Cheesemaking with Mark Solomon



In one night you will learn how to make easy soft kosher cheeses at home, including fresh mozzarella, cream cheese, chevre and ricotta. We'll also get to taste these cheeses in class. Learn about books, online resources, how to troubleshoot your mistakes, and get answers to any other cheesemaking questions you might have.

Thursday, May 5, 2011, 6:30-9:00pm

Cost: \$40/member, \$55/non-member.

Supplies included.

**CLASS SIZE IS LIMITED TO 15.
REGISTER EARLY TO GUARANTEE YOUR SPOT.**

Adult Education

Shabbat Learning

There is no charge for Shabbat Learning.

Israel Discussion Group

Time: 1st Saturday of the month, 1:15—2:15pm

Join us March 5th for a discussion led by Assaf Nisenboym of StandWithUs Northwest.

Mr. Nisenboym came to Seattle from the Jerusalem office to work with Rob Jacobs and StandWithUs Northwest. Assaf is an officer in the Israeli Navy and participated in the 2005 withdrawal from Gaza. The specific focus of his talk will be announced later in the month.

There Shall Be No Needy—Discussion Group

Time: 2nd Saturday of the month, 1:15-2:15pm

Join the Global Poverty Discussion Group and the Social Action Committee each second Shabbat through the coming year as we read and discuss Rabbi Jill Jacobs' book *There Shall be No Needy: Pursuing Social Justice Through Jewish Law and Tradition*. Each month, we will focus on a chapter of the book, covering such issues as poverty and the poor, collection and allocation of tzedakah, housing the homeless, and environmental sustainability. Members of our community will facilitate the discussions confronting contemporary issues and problems by referring to traditional Jewish texts. Our goal is to ignite our involvement in social action and service by enhancing our understanding and commitment to Torah. Prior preparation is not necessary but will enrich your involvement, and you will find copies of Rabbi Jacobs' book in the library. For more information, contact Shelly Crocker, scrocker@crockerlaw.com.

Middah of the Month with Shirah Bell

Time: Usually 4th Shabbat of month, 1:15-2:15pm

Upcoming dates: March 26, April 16

Learner's Minyan with Ron Schneeweiss

Time: 2nd Saturday of the month, 10:30-11:15am

Dates and Topics:

<u>March 19</u>	<u>Apr. 9</u>	<u>June 11</u>
(Note date change)	Ein Keiloheinu	Tallit/Tzitzit
Torah Service		
(part 3)	<u>May 14</u>	
Returning the Torah	Aleinu; Kaddish	

Torah and Prayerbook

Beth Shalom Beit Midrash

Come join fellow scholars in increasing your Talmudic knowledge. CBS member, Joel Goldstein, will be teaching from the Bava Kamma, the 8th chapter regarding people injuring other people. Each class will begin with an introduction from the instructor, followed by guided partner, or hevrutah, study. All levels are welcome.

Dates: 2nd & 4th Thursdays of the month, 7:30-9pm.

Cost: \$5/class, or 6 classes for \$25. Buy your punchcard through the office or on our website.

Sunday Torah Study

The Northwest's feistiest Torah study group wrestles with the text of the upcoming parashah every week in a member-led medley of laughter, challenge, and insight. High-energy participation is strongly encouraged; no prior study is necessary.

Time: Weekly on Sunday, 10:15-11:15am

Cost: No Charge

Women's Rosh Chodesh Chavurah



Come explore how Queen Esther's spirit thrives in you and our community of women. We'll use some engaging and fun methods to dive into this story and see its modern day relevance.

Sunday, March 13th, 7-9 PM.

Facilitator: **Rose Yu**

Call the CBS office for address information. Or email carolbenedick@bethshalomseattle.org or You may also call Carolyn Friedkin at (206) 522-5965 for general information about the Rosh Chodesh Chavurah.

Beginning Israeli Dancing

with Rhona Feldman

Beginning Israeli Dancing for Adults takes place Wednesday nights thanks to the continued generous support of CBS member, Rhona Feldman. Rhona will lead introductory level dances for the first 45 minutes of each class and then more advanced dances for the second half of the class. Older teens and all experience levels and are welcome.

Mark your calendars for every Wednesday.

Come on and GIVE IT A TRY!

Time: Wednesdays 7 – 8:30PM

Date: Every week

Cost: 5-Session Punch Card — \$30/Members; \$40/Non-members



ANNIVERSARIES and BIRTHDAYS Mazel Tov to All

ANNIVERSARIES		Milton Lubow	3/9	Mark Nagel	3/20
Paul Berkelhammer &		Betsy Maurer	3/10	Neal Rosenshein	3/20
Laurie Becker	3/8	Robert Spitzer	3/10	Jonah Silverstein	3/20
Peter & Meryl Shier	3/9	Hope Harris	3/11	Abraham Solovy	3/20
Selig & Maureen Leyser	3/11	Yoel Kintzer	3/11	Judith Arms	3/21
Mark & Judith Benjamin	3/13	Gregory Leyser	3/11	Hannah Cordes	3/21
Jeremiah & Lesley Isgur	3/13	Amit Perlin	3/11	Joseph Jacobowitz	3/21
Robert & Lana Zaher	3/14	Anna Solovy	3/11	Joshua Kahn	3/21
Debrah Jeffs-Grad &		Terry Damm	3/12	Ronnie Katz	3/21
David Barrett	3/17	Tom Damm	3/12	Terry Kegel	3/21
Victor & Cheryl Lamin	3/17	Joani Diskin Saran	3/12	Meira Fine	3/23
Grant & Justine Norwitz	3/17	KaraAnne Grodin	3/12	Michael Hurshell	3/23
Jill Cohen & Rik Katz	3/18	Erika Miyagiwa	3/12	Ana Mazal Light	3/23
Mark & Marina Nagel	3/19	Leora Alk	3/13	Debora Rifkin	3/23
Orly Steinberg & Jill Ginsberg	3/26	Justin Coskey	3/13	Meryl Shier	3/23
Lucy & Mikhail Taskar	3/26	Rhona Feldman	3/13	Robert Snyder	3/23
BIRTHDAYS		Michelle Lawson	3/13	Elena Vasquez	3/23
Alexandra Borodin Grossman	3/1	Martha Somerman	3/13	Shoshanna Barnett	3/24
Rachel Jordan	3/1	Michelle Weinberg	3/13	David Kintzer	3/24
David Adler	3/2	Jennifer Cohen	3/14	Stuart Light	3/24
Livla Bell	3/2	Sylvia Stern	3/14	Martin Safer	3/24
Naomi Borodin Grossman	3/2	Michael Wineburg	3/14	Matt Anderson	3/25
Lisa Orlick-Salka	3/2	Ayelet Yancey	3/14	Andrea Bensimon	3/25
Stephanie Butow	3/3	Kim Goldov	3/15	Claire Bernhard	3/25
Dylan Kittay	3/3	Zachary Rodan	3/15	Harold Goldfarb	3/25
Edward Krigsman	3/3	Daniel Schiff	3/15	Sivan Green	3/25
Marcy Migdal	3/3	Marla Zink	3/15	Claire Lieberman	3/25
Daniela Rifkin	3/3	Irit Eliav	3/16	Arielle Bernstein	3/26
David Volk	3/3	Sharon Kipersztok	3/16	Patti Kieval	3/27
Riva Zeff	3/3	Judith Benjamin	3/17	Elie Amkraut	3/28
Rebecca Friedman	3/4	Yehudit Blume	3/17	Kevin Aylesworth	3/28
Tzachi Litov	3/4	Miriam Bornstein	3/17	Robert Stern	3/28
Peggy Mesnik	3/4	Stewart Shusterman	3/17	Alan Baumgarten	3/29
Laurie Pritchard	3/4	Amy Fulton	3/18	Deborah Isgur	3/29
Michele Yanow	3/4	Michael Grodin	3/18	Alice Kaderlan	3/29
Tamara Griffin	3/5	Elena Mayer	3/18	Andrew Schulman	3/29
Shirley Guterson	3/6	Benjamin Adler	3/19	Ginny Cassidy-Brinn	3/30
Beth Bloom	3/7	Steve Adler	3/19	Ida Cohen	3/31
Emily Safer	3/7	Lee Cronbach	3/19	Andrey Kiselev	3/31
Elisa Erlitz	3/8	Linda Portnoy	3/19	Gabriel Levy	3/31
Noah Etzioni	3/8	Tara Springer	3/19	Marina Nagel	3/31
Yosef Huntley	3/8	Anna Bennett	3/20		

EVENTS IN MEMBERS LIVES

MEMBERS IN SHLOSHIM OR YUD BET HODESH

- י Nancy Cooper, for her father, Jerald Cooper, ז"ל (22 Shevat)
- י Jonathan Solovy, for his father, Jerold Solovy, ז"ל (14 Shevat)
- י Lori Safer, for her father, Barney Cohn, ז"ל (23 Tevet)

- י Benjamin Levie, for his brother, James Levie, ז"ל (15 Tevet)
- י Jettie Person, for her father, Walt Person, ז"ל (8 Tevet)
- י Rochelle Roseman, for her mother, Sara Groonis, ז"ל (17 Kislev)
- י Charles Shifren, for his father, Seymour Shifren, ז"ל

- י Merrie Schriro, for her father, George Schriro, ז"ל (10 Kislev)
- י Dina Tanners, for her mother, Jeanette Nelson, ז"ל (29 Cheshvan)
- י Arielle, Ethan and Jaron Bernstein, for their father, Rob Bernstein, ז"ל (27 Cheshvan)

(Continued on page 17)

EVENTS IN MEMBERS LIVES

(Continued from page 16)

- י Hilary Bernstein, for her husband, Rob Bernstein, z"l (27 Cheshvan)
- י David Marks, for his mother, Edith Rabinowitz Marks, z"l (23 Heshvan)
- י Michael Newman, for his mother, Carol Spero Newman, z"l (15 Cheshvan)
- י Bella Korshin, Svetlana Burke, Emma Shusterman and Marina Kiselev, for their mother, Sofia Byk, z"l (13 Cheshvan)
- י Mark Stiefel, for his father, Ernest Stiefel, z"l (11 Cheshvan)
- י Doris Stiefel, for her husband, Ernest Stiefel, z"l (11 Cheshvan)
- י CBS Congregation, for our friend, Norman Rosenzweig, z"l (23 Tishrei)
- י Judy Borodin, for her mother, Blanche Fersh, z"l (18 Tishrei)
- י Michael de Haan, for his mother, Cecilia de Haan, z"l (21 Elul)
- י Robert Amkraut, for his father, Sidney Amkraut, z"l (19 Elul)
- י Judy Rosenfeld, for her son, Ariel Rosenfeld, z"l (6 Elul)
- י Kim Isaac, for her husband, Josh Isaac, z"l (22 Av)
- י Barry Shane, for his wife, Joyce Shane, z"l (20 Tammuz)
- י CBS Congregation, for our friend, Chaya Amiad, z"l (12 Tammuz)
- י Jesse Kleinman, for his mother, Goldie Darwin Kleinman, z"l (5 Tammuz)
- י Esther Altshul Helfgott, for her husband, Abe Schweid, z"l (3 Tammuz)

MEMBERS OBSERVING YAHZEITS

- י Isabella Chapman, for her mother, Regina Braudes, z"l, and for her father, Joseph Braudes, z"l
- י Amy Fulton, for her grandparents, Regina and Joseph Braudes, z"l
- י Marilyn Bierman, for her mother, Shirley Soforan, z"l
- י Karen Friedman, for her grandfather, Edward Friedman, z"l
- י Michael Kallay, for his mother, Dina Kallay, z"l
- י Selig Leyser, for his father, Alfred Leyser, z"l
- י Robin Moss, for her sister-in-law, Helena Moss, z"l
- י Hope Harris, for her father, Arthur Harris, z"l
- י Beth Huppín, Lisa Low and Ameer Sherer, for their uncle, Jerome Williams, z"l
- י Edward Stern, for his grandparents, Abraham and Hanah Stern, z"l
- י Michael Hurshell and Jennifer Hurshell-Hobson, for their father, Edmond Hurshell, z"l
- י Shoshana Bilavsky, for her father, Shmuel Krongold, z"l

- י Vanessa Edrich, for her father, Emanuel Edrich, z"l
- י Tony Moore, for his father, Robert Moore, z"l
- י Debra Revere, for her father, James Revere, z"l
- י Lynn Gottlieb, for her mother, Ruth Gottlieb, z"l
- י Kayla Weiner, for her friend, Charlotte Pillsuk, z"l
- י Rita Shtull, for her husband, Jacob Shtull, z"l

REFUAH SHLEMAH

CBS MEMBERS

- י Tzvi Moshe ben Mordechai Haim ha'Levi v'Hava (Ron Schneeweiss)
- י Baruch Leib ben Meir
- י Mordecai Ber ben Benyomim (Murray Guterson)
- י Devorah Hannah bat Sarah v'Shlomo (Doris Stiefel)
- י Israel Zvi ben Yehudit v'Shmuel (Howard Klein)
- י Yenta Sarah bat Minche Rukhl (Jane Becker)
- י Yakov ben Fayga (Yakov Koltman)
- י Benyamin Lev ben Aviiva Ora v'Shmuel Moshe (Julian Silver)
- י David Henached shel Goldja (Elric Wolfsbruder McCurdy)
- י Yachna Maryam ha'Cohen bat Masha Leah
- י Chisda ben Yonah (Tony Moore)
- י Chizkiyahu Yitzchok Yehoshuah ben Rachel v'Eliezer
- י Yitzchak ben Miriam v'Benjamin (Ira Kalet)
- י Yaffa Tova bat Reuven (Jane Fein)
- י Batsheva bat Sofia
- י Ita bat Taube (Inna Lacker)
- י Aviella Bara bat Nechama Raisal v'Shlomo Vared (Susan Aylesworth)
- י Malka bat Leah v'Rav Avram (Mildred Rosenbaum)

RELATIVES of Members

- י Chayah bat Chana (Helen Kieval), mother-in-law of Patti Kieval
- י Yisrael Chanech ben Hannah, father of Ellen Spear
- י Dorothy Saran, mother of Craig Saran
- י Shoshana bat Irene (Susan Markowitz), cousin of Patti Kieval
- י Aryeh Lev (Leo Shalinsky), father of Howard Shalinsky
- י Devorah bat Esther (Doreen Marx), step-mother of Jay Kruelewitich
- י Nitzanya Tovah bat Shayna Liba v'Shauil, relative of members
- י Shana Bruchela (Jessica Stone), cousin of Jennifer Cohen
- י Feivel ben Schmuel (Philip Shiekman), father of Carol Slosberg

- י Bentzion Mendel ben Nechama (B. Manny Schreiber), cousin of Dina Tanners
- י Christine Tanners, daughter-in-law of Dina Tanners
- י Wendy Hayes, step-mother of Tamira Hartman
- י Shraga Fieval ben Sarah v'Yeshiya, father or Marci Greenberg, z"l
- י Wendy Horwitch, sister of Carrie Horwitch
- י Burt Horwitch, uncle of Carrie Horwitch

FRIENDS of Members

- י Yehuda Dov Ha'Cohen ben Malkah, (Ernest Cohen), friend of Sharon Greenberg
- י Larry Zolton, a friend of Patti Kieval
- י Rabbi Joshua Stampfer, friend of Congregation Beth Shalom and Camp Solomon Schechter
- י Ilana Liat bat Chana (Lani Horn, former CBS member), friend of Elizabeth Davis
- י Roberta Lipton, friend of Linda-Jo Greenberg
- י Joel Figen, friend of Kayla Weiner
- י Kent Morrissey, friend of Carrie Horwitch
- י Esther bat Sarah (Estelle Wilde), friend of Robert Hovden
- י Gavriella Chaya bat Sara (Congresswomn Gabrielle Giffords)
- י Gilad Shalit, the kidnapped Israeli soldier in Gaza

MILESTONES

- Y Mazel Tov to Tzachi Litov, on the lovely piece about him in the JT News
- Y Mazel Tov to David Volk, on the publication of his new book as well as the reading at Third Place Books

TODDAH RABAH

- Y To our Shabbas Chef, Rabbi Stuart Light and his helpers, Judith Benjamin, Susan Monas, the Sheynkman family: Vladimir, Olga, Ben and Sam, the Light kids: Ana, Ephraim and Yonah, Andrew Lustig and Daniel & Ben Scherzer for creating the 1/15 Kiddush
- Y Joanna Gerber, for her help in our office
- Y To our Shabbas Chef, Michele Yanow and her helpers, Jordan Shapiro, E. Camins Bretts, Iris

(Continued on page 18)

EVENTS IN MEMBERS LIVES

(Continued from page 17)

- Brumer, Ellie Weiss and her mom, Edith Richman, for creating the 1/22 Kiddush
- Y Ruth Etzioni and Michele Yanow for leading the Shabbat Shirah sing-a-long
- Y Beth Skirm, Rebecca Schwartz, and Rimma Lobas for making cookies for PJ Havdallah
- Y Ron Schneeweiss, for being our Guest Darshan on 1/29
- Y To our Shabbas Chefs, Jettie Person & Harry Goldman, and their helpers, Susan Monas, Dan & Carolyn Bernhard, Betsy Schneier and Lisa Fein, for creating the 1/29 Kiddush
- Y Marci Greenberg and Linda Jo Greenberg, for teaching the Kashrut classes
- Y Janice Masur, for her presentation on the Jews of Uganda
- Y Joel Goldstein, for teaching Talmud every other Thursday
- Y Beth Huppín, for volunteering to teach Living Judaism in January
- Y David Brumer, for leading the Israel Discussion
- Y Shirah Bell, for leading Middah of the Month discussions every month
- Y Shelly Crocker, for leading the Global Poverty Group discussions every month
- Y Rabbi Shawn Fields-Meyer, for being our Scholar-in-Residence this year
- Y Marilyn Bierman, for funding the Edwin L. Bierman Scholar-in-Residence Program
- Y To our Shabbas Chefs, Kevin Coskey and his helpers, Gail Coskey, Rachel Coskey, Mitch Dernis, Cheryl McDonald, Trudy Antolin and Robert Isgur for creating the 2/5 Kiddush
- Y Alice Kaderlan and Harry Goldman, for their help on the new Machzor purchase
- Y Michael Krasik, for his recent high "wire" work
- Y Marie Poole, for her endless hours working on our budget, finances, etc
- Y Craig Lawson, for his help in organizing the USCJ event
- Y Debbie Lawson and Nancy Zeitz, for baking cookies for the USCJ event

A SPECIAL THANKS TO ALL OF OUR VOLUNTEERS WHO GENEROUSLY DEVOTE THEIR TIME TO THE SHUL CONSISTENTLY!!

CONTRIBUTIONS

Adult Education Fund

Cheryl Cohen

Wishing Ron Schneeweiss a Refuah Shlemah

Cemetery Fund

Gene & Gerry Huppín

In memory of uncle, Sam Huppín, z"l

Double Chai Plus Chavurah

Mark & Judith Benjamin

Steven Bock & Hope Harris

Elyce & Michael Brauerman

Andrew Cohen & James Packman

Vanessa Edrich & Don Kronenberg

Karen Friedman & Rob Snyder

Kim & Nancy Goldov

Mark Igra & Nancy Simon

Robert & Deborah Isgur

Ellis & Vera Kantor

Wally & Bernice Kegel

Sheryl Kipnis & Stephen King

Michael Krasik & Nancy Geiger

Lis Lutz

Steve & Ellen Marx

Karen McGonigle

Marilyn Meyer

Joel & Marcy Migdal

Jeff Miller & Joan Lite Miller

Tony Moore

Philip Nurick & Liora Minkin

Chris & Mia O'Quin

Rebecca & Matthew Phelps

Howard & Sarah Shalinsky

Ellen & Brad Spear

Perry & Michelle Weinberg

Ellie Weiss & Dana Tell

Elana Zaiman & Seth Rosenbloom

Stuart & Wiebke Light

General Fund

Linda & Robert Kanter

Michael & Deirdre Gabbay

Jeff & Marcy Gillman

Joani Diskin Saran & Craig Saran

For Nancy Cooper, in memory of

Jerald Cooper, z"l

Steve Perlmutter & Diane Douglas

In memory of father, Seymour

Perlmutter, z"l

Hope Harris & Steven Bock

In memory of Arthur Harris, z"l

Steve Alter & Deb Frockt

Wishing Ron Schneeweiss a Refuah

Shlemah

Gail Zucker

In honor of Paul & Tamar Azous, on the birth of their daughter, Zehava For Rochelle Roseman, in memory of Sara Groonis, z"l

For Margot Kravette, in memory of Corine Solomon, z"l

For Hilary Bernstein, in memory of Robert Bernstein, z"l

In memory of father, Okkie Rabinowitz, z"l

In memory of brother, Mark Rabinowitz, z"l

Doris Stiefel

For Lori Safer, in memory of Barney Cohn, z"l

Jack Richlen

In memory of Pearl Richlen, z"l

Haim & Naomi Malka

Wishing Ron Schneeweiss a Refuah Shlemah

Ron DeChene & Robert Hovden

For Dina Tanners & Howard Cockerham, on the birth of their granddaughter

(Continued on page 19)

CONTRIBUTIONS

(Continued from page 18)

- For Joel & Marcy Migdal, on the birth of their granddaughter
 For Will Berkovitz & Lelach Rave, on the birth of their daughter
 For Hilary Bernstein, in memory of Robert Bernstein, z"l
 In honor of Zachary Levy becoming a Bar Mitzvah
 In honor of Sam Sherer becoming a Bar Mitzvah
 Mazel Tov to the O'Quins
 For Tamar & Paul Azous, on the birth of their daughter
 In honor of an Aliyah
 For Ron & Diana Schneeweiss, on the birth of their new grandchild
Edward & Sylvia Stern
 In memory of mother, Rose Stern, z"l
Isaac & Susan Morgensztern
 In memory of sister, Ann Schmill, z"l
Margot Kravette
 In honor of Benjy Nurick's Bar Mitzvah
Deborah Kerdeman & Dave Tarshes
 For Merrill Ringold, on his special birthday
 For Lori Safer, in memory of Barney Cohn, z"l
Jane Stiefel
 In memory of uncle, Ernest Stiefel, z"l
David Walt & Kaden Oppenheimer and Efrem & Linda Krisher families
 For Doris Stiefel, in memory of Ernest Stiefel, z"l
Mimi Schorr
 For Tamar & Paul Azous, in honor of the birth of their daughter
Hanna & Bob Cordes
 For Julie Klein, in memory of Mark Rhea, z"l
Susan Monas & Sam Wineburg
 For Nancy Cooper, in memory of her father Jerald Cooper, z"l
 For Jonathan Solovy, in memory of his father, Jerald Solovy, z"l
 For Gloria Goldstein, in memory of her husband, Norton Goldstein, z"l
- Refuah Shlemah to Ron Schneeweiss**
Refuah Shlemah to Doris Stiefel
Mazal tov to Peter Ringold, on opening his new restaurant Satay
- Israel Travel Fund**
Joel & Kate Altus
 In memory of mother, Sabina Altus, z"l
- Kiddush Fund**
Pat Hurshell Reinert
 In memory of sister, Sheila Demetre, z"l
- Kitchen Fund**
Francine & Sidney Cohen
 In memory of mother, Pearl Richlen, z"l
Vladimir & Olga Sheynkman
 In memory of father, Shalom Sheynkman, z"l
- Landscape Fund**
Fern Rogow
 In memory of grandfather, Michael Rogow, z"l
Emily & Rachel Groman
 In memory of great-grandfather, Michael Rogow, z"l
- Mitzvah Corps Fund**
Jack & Barbara Schwartz
 For Gloria Goldstein, in memory of Norton Goldstein, z"l
Rita Goldenberg
 For Gloria Goldstein, in memory of Norton Goldstein, z"l
Bob Cordes
 In appreciation of Michaela Yancey
Charlie & Andrea Schwartz
 For Gloria Goldstein & family, in memory of Norton Goldstein, z"l
Martin Schnitzer
 In memory of sister, Roberta Wodlinger, z"l
- Rabbi's Discretionary Fund**
Shannon Blackley
Marcy & Jeff Gillman
 In memory of our beloved father and grandfather, Stewart Sherling, z"l
- Edward & Sylvia Stern**
 In memory of brother, David Stern, z"l
 In memory of grandparents, Hannah & Abraham Stern, z"l
Maureen & Selig Leyser
 In memory of mother, Lottie Neumann, z"l
 In memory of father, Alfred Leyser, z"l
Barbara & George Grashin
 Wishing Doris Stiefel a speedy recovery
Lynette & Rich Brodsky
 In memory of mother, Mollie Brodsky, z"l
Marilyn Bierman
 In memory of mother, Shirley Soforan, z"l
Norman & Isabella Chapman
 In memory of mother, Mollie Chapman, z"l
Peter & Esther Damm
 For Gloria Goldstein, in memory of Norton Goldstein, z"l
Edith Horn
 Wishing Ron Schneeweiss a Refuah Shlemah
 For Gloria Goldstein, in memory of Norton Goldstein, z"l
 Wishing Doris Stiefel a Refuah Shlemah
 For Lori Safer, in memory of Barney Cohn, z"l
Gerda & Perry Frumkin
 In honor of Marilyn Bierman
Isabella & Norm Chapman
 In memory of parents, Joseph & Regina Braudes, z"l
- Religious School Fund**
Henry Bradley Jr.
Ron & Diane Schneeweiss
Howard & Sarah Shalinsky
Joel & Marcy Migdal
- Social Action Fund**
Judith Arms & Stan Sorscher
 In honor of Carolyn Cohen & Robert Isgur's leadership of the SAC

SERVICE SCHEDULE FOR MARCH 2011 - ADAR I~ADAR II 5771

Members of the Beth Shalom community lead worship services at CBS. If you have synagogue skills and wish to participate, call the Sandy Sloane, 206-524-0075.

CBS DAILY MINYANS

Please support the minyan by attending on a regular or even irregular basis one or more days a week. The minyan does not meet on Festival days. The minyan (Monday – Friday) starts at 7:00AM on all American holidays except Thanksgiving, December 25th, New Year's Day, Memorial Day, Independence Day and Labor Day when it will meet at 9:00AM.

- ✓ Monday through Friday mornings: 7:00-7:45am (Beit Hamidrash).
- ✓ Sunday mornings: 9:30-10:15am, (Beit Hamidrash)
- ✓ Monday Evening Minyan: 7:30-8:00pm, (Beit Hamidrash)

For Torah Readings on Mondays and Thursdays, add ten to fifteen minutes to services.

YESHAR KOACH TO OUR SERVICE LEADERS SINCE THE LAST RUACH

Ashrei Club: Samuel Sheynkman, Talia Yancey, Shuli Dernis, Amit & Mital Perlin

Daveners: Rachel Jacobson, Joel Goldstein, Shira Orzech, Linda Jo Greenberg, Teddy Rothman, Daniel Norwitz

Leyners: Joel Migdal, Tzachi Litov, Mitch Dernis

Haftorah & Megilah: Debby Kerdeman, Daniel Norwitz

Gabbai Rishon & Shenni: Joel Migdal, Teddy Rothman, Jason Kintzer, Marilyn Meyer, Nance Adler, Joel Goldstein

Gabbaim: Karen Binder, Nancy Fisher-Allison, Lynn Gottlieb, Jacquie Bayley, Margot Kravette, Lyle Margulies

Greeters: Dahveed Frum, Ron Yancey, Craig Lawson, Brent Brown, David Barrett, Howard Cockerham, Judith Mentzer, Allen Gown, Sheryl Kipnis

Minyan Leaders: Sandra Layman, Joel Migdal, Ellen Goldblatt, Steve Marx, Norbert Sorg, Nancy Geiger, Robert Hovden

Kiddush Sponsors: Kiddush Club

Beth Shalom's Judaica On-line Shop

Remember our online Judaica shop? The CBS homepage at Judaicabeautiful.com, directly benefits Congregation Beth Shalom. A percentage of all proceeds will come back to us and is yet another way to support the community at no additional cost to you. Just shop!

A few ways this site can be useful would be to consider getting your simchah gifts here for B'nai Mitzvah, weddings and other lifecycle events. There is an online registry to take advantage of as well as many other exciting benefits.

The direct link to the website:

<http://bethshalomseattle.judaicabeautiful.com/store/> or you can go to our website at www.bethshalomseattle.com.



CANDLIGHTING AND THE WEEKLY KABBALAT SHABBAT MINYAN

(Friday Evening Services): Beit Hamidrash

The regular Kabbalat Shabbat services last approximately one hour. The service is spirited with the beautiful melodies of Kabbalat Shabbat including L'cha Dodi and Yedid Nefesh. After services, participants return home for Shabbat dinner. Shabbat hospitality will be available. Children are welcomed and treasured. If you wish to help lead services, to offer home hospitality after services, or simply to participate on a regular basis, please contact Paul Schwartz at kabbalatshabbat@bethshalomseattle.org.

Date	Kabbalat Shabbat	Candlelighting	Havdallah
March 4-5	6:00-7:00 PM	5:40 PM	6:41 PM
March 11-12	6:00-7:00 PM	5:50 PM	6:51 PM
March 18-19	6:00-7:00 PM	7:00 PM	8:02 PM
March 25-26	6:00-7:00 PM	7:10 PM	8:12 PM

SHABBAT MORNING SERVICES: Main Sanctuary at 9:30am - 12:00pm

Shabbat Morning Dates & Portion	Concurrent Services	B'nai Mitzvah, Sermon Topics and Special Occasions
Shabbat Shekalim March 5: Pekudei Exodus 38:21-39:21 Maftir: Exodus 30:11-16 Haftarah: II Kings 12:1-17	10:00am-12:00pm Babysitting Co-op 10:30am FDI, Kids Kehilla 11:00am Tot Shabbat 1:15pm Israel Disc Grp	Aufruf for Joel Freedman & Rebecca Cory
March 12: Vayikra Leviticus 1:1-2:16 Haftarah: Isaiah 43:21-44:23	10:00am-12:00pm Babysitting Co-op 10:00am RS Shabbaton #3 10:30am FDI, Kids Kehilla 1:15pm Global Poverty Disc Grp	
Shabbat Zachor March 19: Tzav Leviticus 6:1-7:10 Maftir: Deuteronomy 25:17-19 Haftarah: I Samuel 15:2-34	10:00am Youth Minyan for Adults 10:00am-12:00pm Babysitting Co-op 10:30am FDI, Kids Kehilla 10:30am Learners Minyan 1:15pm Global Poverty Disc Grp 7:30-10:30 Purim Activities	
Shabbat Parah March 26: Shemini Leviticus 9:1-10:11 Maftir: Numbers 19:1-22 Haftarah: Ezekiel 36:16-38	10:00am Youth Minyan 10:00am-12:00pm Babysitting Co-op 10:30am FDI, Kids Kehilla 1:15am Middah of the Month	

5771
2011

March

adar I
adar II

SUNDAY		MONDAY	TUESDAY	WEDNESDAY	THURSDAY	FRIDAY	SATURDAY
FEBRUARY S M T W T F S 1 2 3 4 5 6 7 8 9 10 11 12 13 14 15 16 17 18 19 20 21 22 23 24 25 26 27 28		6 USY Spring Kinnus 9:15am—Sunday School 9:30am—Minyan 10:15am—Torah Study 12:30pm—RS Staff Mtg 2:00pm—Kadlima Laser Tag	1 25 adar I 7:00am—Minyan 12:00pm—Lunch & Learn 4:15pm—Hebrew School 6:30pm-9:15pm—Adult Ed. 6:30pm—Scrip sales	2 26 adar I 7:00am—Minyan 7:00am—Minyan 6:30pm—Scrip sales 7:00pm—Israeli Dancing Class 7:00pm—Adult Education	3 27 adar I 7:00am—Minyan 4:30pm—Prozдор 7:00pm—USY Board Meeting 7:00pm—Adult Education	4 28 adar I USY Spring Kinnus > 7:00am—Minyan 6:00pm—Kabbalat Shabbat Service	5 29 adar I USY Spring Kinnus > Aufruf of Joel Freedman & Rebecca Cory 9:30am—Shabbat Services 10:00am—Babysitting Co-op 10:30am—FDI & Junior Cong. 11:00am—Tot Shabbat 1:15pm—Global Pov Discuss 7:30pm—Mystery Dinner <i>Pekude</i>
6 USY Spring Kinnus 9:15am—Sunday School 9:30am—Minyan 10:15am—Torah Study 12:30pm—RS Staff Mtg 2:00pm—Kadlima Laser Tag		7 1 adar II 7:00am—Minyan 6:00pm—ECC Staff Meeting 7:30pm—Minyan	8 2 adar II 7:00am—Minyan 4:15pm—Hebrew School 6:30pm-9:15pm—Adult Ed. 6:30pm—Scrip sales	9 3 adar II 7:00am—Minyan 6:30pm—Scrip sales 7:00pm—Israeli Dancing Class 7:00pm—Adult Education	10 4 adar II 7:00am—Minyan 4:30pm—Prozдор 6:00pm—Finance Cmte Mtg 7:30pm—Exec Cmte Mtg 7:30pm—Talmud Class	11 5 adar II 7:00am—Minyan 6:00pm—Kabbalat Shabbat Service	12 6 adar II 9:30am—Shabbat Services 10:00am—Babysitting Co-op 10:00am—RS Shabbaton #3 10:30am—FDI & Junior Cong. 1:15pm—Global Pov Discuss 7:30pm—Improv Night
13 9:30am—Minyan 10:15am—Torah Study 10:15am—Sitch & Schmooze 11:00am—6th grade Minyan 7-9pm—Rosh Chodesh Group (offsite)		14 8 adar II 7:00am—Minyan 7:30pm—Minyan	15 9 adar II 7:00am—Minyan 9:30am—ECC Fire drill 4:15pm—Hebrew School 6:30pm-9:15pm—Adult Ed. 6:30pm—Scrip sales	16 10 adar II 7:00am—Minyan 6:30pm—Scrip sales 7:00pm—Israeli Dancing Class 7:00pm—Adult Education	17 11 adar II 7:00am—Minyan 4:30pm—Prozдор 7:30pm—Board Meeting	18 12 adar II 7:00am—Minyan 6:00pm—Kabbalat Shabbat Service	19 13 adar II Evev Purim 9:30am—Shabbat Services 10:00am—Babysitting Co-op 10:00am—Minyan for Adults 10:30am—FDI & Junior Cong. 10:30am—Learner's Minyan <i>Tzar</i> 7:00—Minchah/Maariv 7:30-10:15pm—Purim Activities
20 Mitzvah Day 9:15am—Sunday School 9:30am—Minyan/Megilah Reading 11:15am—Purim Lunch Debate 12:15pm—Matanot L'Evyonim 3:00pm—Shaarei Tikvah Purim for people w/ disabilities PURIM		21 15 adar II 7:00am—Minyan 7:30pm—Minyan	22 16 adar II 7:00am—Minyan 4:15pm—Hebrew School 6:30pm-9:15pm—Adult Ed. 6:30pm—Scrip sales	23 17 adar II 7:00am—Minyan 6:30pm—Scrip sales 7:00pm—Israeli Dancing Class 7:00pm—Adult Education	24 18 adar II 7:00am—Minyan 4:30pm—Prozдор 7:30pm—Talmud Class	25 19 adar II 7:00am—Minyan 6:00pm—Kabbalat Shabbat Service	26 20 adar II 9:30am—Shabbat Services 10:00am—Youth Minyan 10:00am—Babysitting Co-op 10:30am—FDI & Junior Cong. 1:15pm—Middah of the month
27 9:15am—Sunday School 9:30am—Minyan 10:15am—Torah Study 1:00pm—USY Mitzvah Day 4:00pm—Kadlima Iron Chef		SHUSHAN PURIM 22 adar II		30 24 adar II 7:00am—Minyan 6:30pm—Scrip sales 7:00pm—Israeli Dancing Class 7:00pm—Adult Education	31 25 adar II 7:00am—Minyan 4:30pm—Prozдор	SHABBAT PARAH APRIL S M T W T F S 3 4 5 6 7 8 9 10 11 12 13 14 15 16 17 18 19 20 21 22 23 24 25 26 27 28 29 30	



Congregation Beth Shalom Mail in Tzedakah Form

You may also call us at 206-524-0075 and make your donation via credit card.

1. DONOR INFORMATION

Name: _____

Address: _____

City, State, Zip: _____

Acknowledgement cards are mailed to the honoree or the family of those memorialized, and are also listed in our monthly newsletter, the *Ruach*.

To minimize the use of synagogue resources please send my acknowledgement via e-mail to:

2. GIFT INFORMATION

My gift is (choose one) In honor In memory In honor of an Aliyah

of _____

I would like a gift acknowledgement sent to (other than myself):

Name: _____

Address: _____

City, State, Zip: _____

PLEASE USE MY DONATION TO SUPPORT :

General Operating Fund

All donations to the General Fund help maintain a balanced budget.

A Special Fund:

- | | |
|---|---|
| <input type="checkbox"/> Adult Education Fund | <input type="checkbox"/> Campership |
| <input type="checkbox"/> Cemetery Fund | <input type="checkbox"/> Endowment Fund |
| <input type="checkbox"/> Israel Travel Fund for Youth | <input type="checkbox"/> Joey Wes Library Fund |
| <input type="checkbox"/> Kiddush Club | <input type="checkbox"/> Kitchen Fund |
| <input type="checkbox"/> Landscape Fund | <input type="checkbox"/> Library Fund |
| <input type="checkbox"/> Mitzvah Corps Fund | <input type="checkbox"/> Prayer Book Fund |
| <input type="checkbox"/> Religious School Fund | <input type="checkbox"/> Rabbi's Discretionary Fund |
| <input type="checkbox"/> Social Action Fund | <input type="checkbox"/> Torah Fund |
| <input type="checkbox"/> Young Adult/3rd Friday Fund | <input type="checkbox"/> Youth Fund |

3. PAYMENT INFORMATION (Note: there is an additional 3% charge on all credit cards)

Enclosed is my gift of \$ _____ via (choose one) Check Visa Mastercard

Card # _____ / _____ / _____ / _____ Exp. _____

Card Verification # _____

Signature of Cardholder _____ Date _____

Thank you for your support of Congregation Beth Shalom!

Please return form to:
Congregation Beth Shalom
 6800 35th Ave NE
 Seattle, WA 98115
 Fax: 206-525-5095

Congregation
Beth Shalom

6800 35th Ave NE
Seattle, WA 98115

tel 206.524.0075

fax 206.525.5095

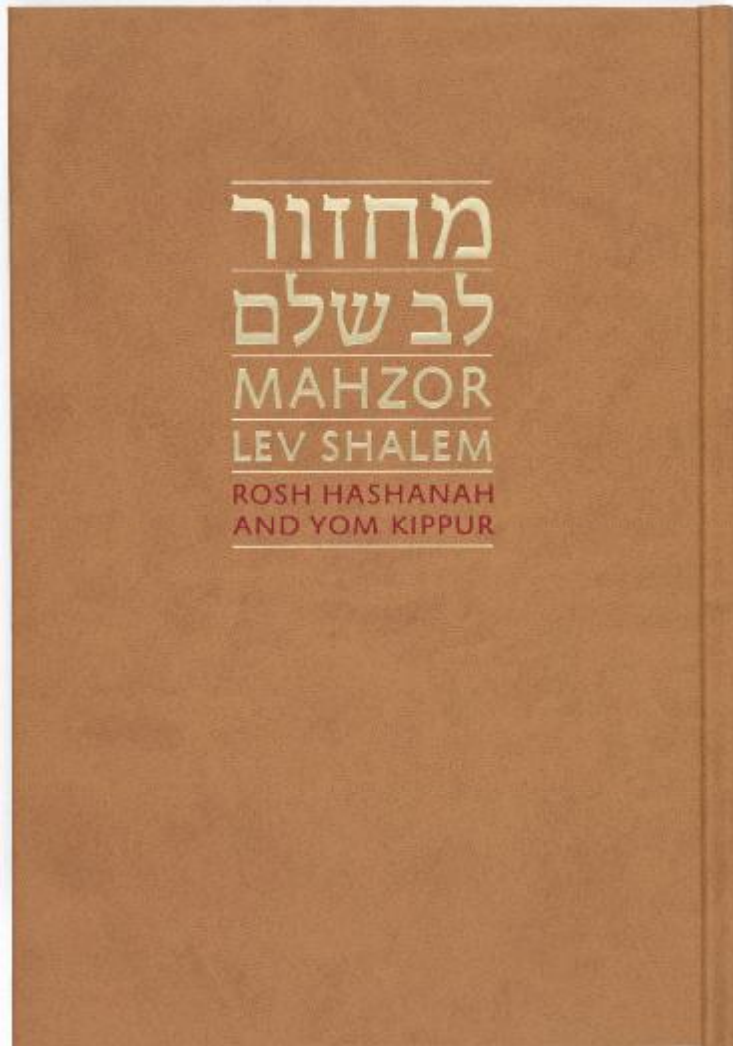
email: info@bethshalomseattle.org

www.bethshalomseattle.org



Non-Profit Org.
U.S. Postage
PAID
Seattle, WA
Permit #802

Voted Best Congregation in Town!



The Mahzor Lev Shalem From Rabbi Borodin

I have been teaching a weekly lunch & learn class this past year on the Mahzor Lev Shalem. We have been studying since October and have studying the evening service for Rosh Hashanah and Shacharit service (first part of the morning service) for Rosh Hashanah. While we study weekly, we have not even arrived at the Torah readings or musaf service. Why is the pace so "slow"?

For the past five months, we have been enjoying the commentary on the pages of the Mahzor Lev Shalem and its teachings on the meaning of the prayers. The commentary opens up for the user, new ways to relate to prayer in general and to the specific prayers on the page.

The mahzor is based on a four column layout. One column provides the traditional Hebrew text (with options to include the matriarchs). Imbedded in the Hebrew is the use of an occasional boldface type font to illustrate acrostics and other hidden and mystical messages within the Hebrew. The page is also laid out in a way to highlight both the poetry and the prose of the prayers. Also in this column are instructions about the choreography of prayer, when to bow, when to stand.

A second column provides a new poetic English translation which is both readable and faithful to the

(Continued on page 6)